

Product datasheet for **TA398071**

Swine IgG (H&L) Antibody Biotin Conjugated

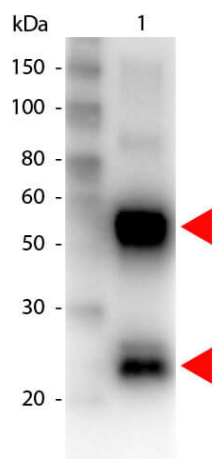
Product data:

Product Type:	Secondary Antibodies
Product Name:	Swine IgG (H&L) Antibody Biotin Conjugated
Applications:	ELISA, IHC, WB
Recommended Dilution:	WB: 1:2,000 - 1:10,000 IHC: 1:1,000 - 1:5,000 ELISA: 1:20,000 - 1:100,000
Host:	Goat
Immunogen:	Swine IgG whole molecule
Formulation:	0.02 M Potassium Phosphate, 0.15 M Sodium Chloride, pH 7.2
Reconstitution Method:	Restore with deionized water (or equivalent) - Reconstitution Volume: 1.0 mL
Concentration:	2.0 mg/mL - lot specific
Conjugation:	Biotin
Storage:	Store vial at 4° C prior to restoration. For extended storage aliquot contents and freeze at -20° C or below. Avoid cycles of freezing and thawing. Centrifuge product if not completely clear after standing at room temperature. This product is stable for several weeks at 4° C as an undiluted liquid. Dilute only prior to immediate use.
Note:	Anti-Swine IgG (H&L) Biotin Conjugated Antibody has been tested by western blot and assayed against 1.0 ug of Swine IgG in a standard capture ELISA using Peroxidase Conjugated Streptavidin #S000-03 and ABTS (2,2'-azino-bis-[3-ethylbenthiiazoline-6-sulfonic acid]) code # ABTS-100 as a substrate for 30 minutes at room temperature. A working dilution of 1:30,000 to 1:150,000 of the reconstitution concentration is suggested for this product.



[View online »](#)

Product images:



Western Blot of Biotin conjugated Goat anti-Swine antibody. Lane 1: Swine IgG. Lane 2: none. Load: 100 ng per lane. Primary antibody: Biotin conjugated swine antibody at 1:1,000 for overnight at 4°C. Secondary antibody: HRP Streptavidin secondary antibody at 1:40,000 for 30 min at RT. Block: MB-070 for 30 min at RT. Predicted/Observed size: 55 and 28 kDa for Swine IgG. Other band(s): none.