

## Product datasheet for **TA398067**

### Swine IgG (H&L) Antibody

#### Product data:

**Product Type:** Secondary Antibodies

**Product Name:** Swine IgG (H&L) Antibody

**Applications:** ELISA, IHC, WB

**Recommended Dilution:** **WB:** 1:2,000 - 1:10,000  
**IHC:** 1:1,000 - 1:5,000  
**ELISA:** 1:20,000 - 1:100,000

**Reactivity:** Porcine

**Host:** Goat

**Immunogen:** Anti-Swine IgG (H&L) was produced by repeated immunization with swine whole IgG molecule in goat.

**Formulation:** 0.02 M Potassium Phosphate, 0.15 M Sodium Chloride, pH 7.2

**Concentration:** 2.17 mg/mL - lot specific

**Conjugation:** Unconjugated

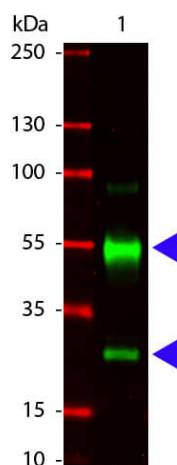
**Storage:** Store vial at 4° C prior to opening. This product is stable for several weeks at 4° C as an undiluted liquid. Dilute only prior to immediate use. For extended storage aliquot contents and freeze at -20° C or below. Avoid cycles of freezing and thawing.

**Note:** Anti-Swine IgG (H&L) is tested by western blot and is suitable for use in immunoelectrophoresis, western-blot, competitive western-blot, ELISA and competitive ELISA assays. Specific conditions for reactivity and signal detection should be optimized by the end user.



[View online »](#)

## Product images:



Western Blot of Goat anti-Swine IgG antibody.  
Lane 1: Swine IgG (p/n 014-0102). Lane 2: none.  
Load: 100 ng per lane. Primary antibody: Swine Antibody at 1:1,000 o/n at 4°C . Secondary antibody: DyLight™ 649 goat secondary antibody at 1:20,000 for 30 min at RT. Block: MB-070 for 30 min at RT. Predicted/Observed size: 55 kDa, 28 kDa for Swine IgG. Other band(s): none.