

## Product datasheet for **TA398065**

### Sheep IgG (H&L) Antibody Texas Red™ Conjugated

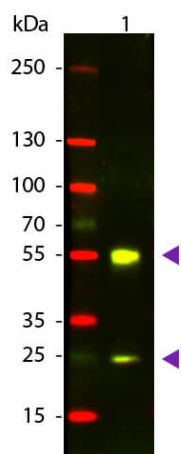
#### Product data:

Product Type:	Secondary Antibodies
Product Name:	Sheep IgG (H&L) Antibody Texas Red™ Conjugated
Applications:	FC, IF
Recommended Dilution:	<b>IF:</b> 1:1,000 - 1:5,000 <b>FC:</b> 1:500 - 1:2,500 <b>FLISA:</b> 1:10,000 - 1:50,000
Host:	Donkey
Immunogen:	Sheep IgG whole molecule
Formulation:	0.02 M Potassium Phosphate, 0.15 M Sodium Chloride, pH 7.2
Reconstitution Method:	Restore with deionized water (or equivalent) - Reconstitution Volume: 1.0 mL
Concentration:	2.0 mg/mL - lot specific
Conjugation:	Texas Red
Storage:	Store vial at 4° C prior to restoration. For extended storage aliquot contents and freeze at -20° C or below. Avoid cycles of freezing and thawing. Centrifuge product if not completely clear after standing at room temperature. This product is stable for several weeks at 4° C as an undiluted liquid. Dilute only prior to immediate use.
Note:	Sheep IgG (H&L) Antibody Texas Red™ Conjugated antibody has been tested by western blot and are designed for immunofluorescence microscopy, fluorescence based plate assays (FLISA) and fluorescent western blotting. This product is also suitable for multiplex analysis, including multicolor imaging, utilizing various commercial platforms.



[View online »](#)

## Product images:



Western Blot of Donkey anti-Sheep IgG Texas Red Conjugated Antibody. Lane 1: Sheep IgG. Lane 2: None. Load: 50 ng per lane. Primary antibody: None. Secondary antibody: Texas Red donkey secondary antibody at 1:1,000 for 60 min at RT. Block: MB-070 for 30 min at RT. Predicted/Observed size: 28 & 55 kDa, 28 & 55 kDa for Sheep IgG. Other band(s): None.