

Product datasheet for **TA398054**

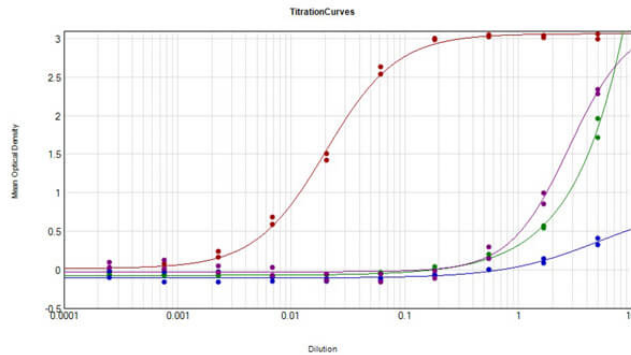
Sheep IgG (H&L) Antibody Pre-adsorbed

Product data:

Product Type:	Secondary Antibodies
Product Name:	Sheep IgG (H&L) Antibody Pre-adsorbed
Applications:	ELISA, IHC, WB
Recommended Dilution:	WB: 1:2,000 - 1:10,000 IHC: 1:1,000 - 1:5,000 ELISA: 1:39,200 - 1:59,200
Host:	Donkey
Immunogen:	Anti-Sheep IgG (H&L) was produced by repeated immunization with Sheep IgG whole molecule in donkey.
Formulation:	0.02 M Potassium Phosphate, 0.15 M Sodium Chloride, pH 7.2
Concentration:	1.0 mg/mL - lot specific
Conjugation:	Unconjugated
Storage:	Store vial at 4° C prior to opening. This product is stable for several weeks at 4° C as an undiluted liquid. Dilute only prior to immediate use. For extended storage aliquot contents and freeze at -20° C or below. Avoid cycles of freezing and thawing.
Note:	Anti-Sheep IgG (H&L) has been tested by ELISA and is suitable for use in immunoelectrophoresis, western-blot, competitive western-blot, ELISA and competitive ELISA assays. Specific conditions for reactivity and signal detection should be optimized by the end user.



[View online »](#)

Product images:

ELISA Results of Donkey Anti-Sheep IgG Antibody (Min X Ch GP Ham Hs Hu Ms Rb Rt Serum Proteins) tested against purified Sheep IgG Mx8. Each well was coated in duplicate with 1.0 μ g of Sheep IgG (p/n 013-0102) [Red Line], Chicken IgG (p/n 003-0102) [Green Line], Guinea Pig IgG (p/n 006-0102) [Blue Line], Hamster IgG (p/n 007-0102) [Purple Line], Horse IgG (p/n 008-0102), Human IgG (p/n 009-0102), Mouse IgG (p/n 010-0102), Rabbit IgG (p/n 011-0102), and Rat IgG (p/n 012-0102). The working dilution of Sheep IgG MX8 is 1:49,000. The starting dilution of antibody was 5 μ g/ml and the X-axis represents the Log₁₀ of a 3-fold dilution. This titration is a 4-parameter curve fit where the IC₅₀ is defined as the titer of the antibody. Assay performed using HRP Conjugate Stabilizer (p/n MB-076), Goat Anti-Donkey IgG HRP conjugated (p/n 616-4302), and TMB substrate (p/n TMBE-1000).