

## Product datasheet for **TA398044**

### Rat IgG (H&L) Antibody Alkaline Phosphatase Conjugated

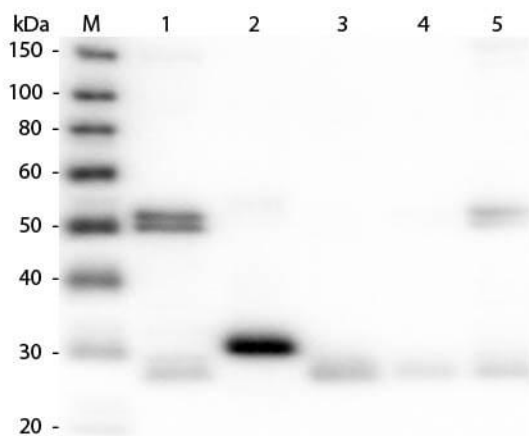
#### Product data:

Product Type:	Secondary Antibodies
Product Name:	Rat IgG (H&L) Antibody Alkaline Phosphatase Conjugated
Applications:	ELISA, IHC, WB
Recommended Dilution:	<b>WB:</b> 1:500 - 1:2,500 <b>IHC:</b> 1:200 - 1:1,000 <b>ELISA:</b> 1:2,000 - 1:10,000
Host:	Donkey
Immunogen:	Rat IgG whole molecule
Formulation:	0.05 M Tris Chloride, 0.15M Sodium Chloride, 0.001 M Magnesium Chloride, 0.0001M Zinc Chloride, 50% (v/v) Glycerol; pH 8.0
Concentration:	1.0 mg/mL - lot specific
Conjugation:	Alkaline Phosphatase
Storage:	Store vial at 4° C before opening. DO NOT FREEZE. This product is stable at 4° C as an undiluted liquid. Dilute only prior to immediate use. Freezing alkaline phosphatase conjugates will result in a substantial loss of enzymatic activity.
Note:	This product has been assayed against 1.0 ug of Rat IgG in a standard capture ELISA using pNPP p-nitrophenyl phosphate code # NPP-10 as a substrate for 30 minutes at room temperature. A working dilution of 1:2,000 to 1:12,000 is suggested for this product.



[View online »](#)

**Product images:**



Western Blot of Anti-Rat IgG (H&L) (DONKEY) Antibody (Min X Bv Ch Gt GP Ham Hs Hu Ms Rb & Sh Serum Proteins) (p/n 612-701-120). Lane M: 3  $\mu$ l Molecular Ladder. Lane 1: Rat IgG whole molecule (p/n 012-0102). Lane 2: Rat IgG F(c) Fragment (p/n 012-0103). Lane 3: Rat IgG Fab Fragment (p/n 012-0105). Lane 4: Rat IgM Whole Molecule (p/n 012-0107). Lane 5: Rat Serum (p/n [D310-05]). All samples were reduced. Load: 50 ng per lane. Block: MB-070 for 30 min at RT. Primary Antibody: Anti-Rat IgG (H&L) (DONKEY) Antibody (Min X Bv Ch Gt GP Ham Hs Hu Ms Rb & Sh Serum Proteins) (p/n 612-701-120) 1:10,000 for 60 min at RT. Secondary Antibody: Anti-Donkey IgG (GOAT) Peroxidase Conjugated Antibody (p/n 616-1302) 1:40,000 in MB-070 for 30 min at RT. Predicted/Observed Size: 25 and 55 kDa for Rat IgG and Serum, 25 kDa for F(c) and Fab, 78 and 25 kDa for IgM. Rat F(c) migrates slightly higher.