

Product datasheet for **TA398042**

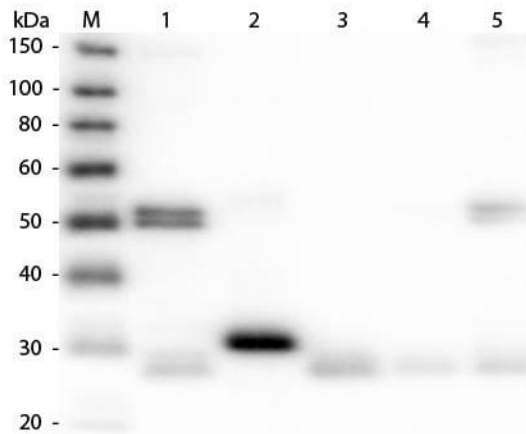
Rat IgG (H&L) Antibody Peroxidase Conjugated

Product data:

Product Type:	Secondary Antibodies
Product Name:	Rat IgG (H&L) Antibody Peroxidase Conjugated
Applications:	ELISA, IHC, WB
Recommended Dilution:	WB: 1:1,000 - 1:10,000 IHC: 1:500 - 1:2,500 ELISA: 1:10,000 - 1:50,000
Host:	Donkey
Immunogen:	Rat IgG whole molecule
Formulation:	0.02 M Potassium Phosphate, 0.15 M Sodium Chloride, pH 7.2
Reconstitution Method:	Restore with deionized water (or equivalent) - Reconstitution Volume: 1.0 mL
Concentration:	2.0 mg/mL - lot specific
Conjugation:	HRP
Storage:	Store vial at 4° C prior to restoration. For extended storage aliquot contents and freeze at -20° C or below. Avoid cycles of freezing and thawing. Centrifuge product if not completely clear after standing at room temperature. This product is stable for several weeks at 4° C as an undiluted liquid. Dilute only prior to immediate use.
Note:	Anti-Rat IgG Peroxidase Conjugated Antibody has been tested by ELISA and is assayed against 1.0 ug of Rat IgG in a standard capture ELISA using ABTS (2,2'-azino-bis-[3-ethylbenzothiazoline-6-sulfonic acid]) code # ABTS-100 as a substrate for 30 minutes at room temperature. A working dilution of 1:5,000 to 1:20,000 of the reconstitution concentration is suggested for this product.



[View online »](#)

Product images:


Western Blot of Anti-Rat IgG (H&L) (DONKEY) Antibody (Min X Bv Ch Gt GP Ham Hs Hu Ms Rb & Sh Serum Proteins) (p/n 612-701-120). Lane M: 3 μ l Molecular Ladder. Lane 1: Rat IgG whole molecule (p/n 012-0102). Lane 2: Rat IgG F(c) Fragment (p/n 012-0103). Lane 3: Rat IgG Fab Fragment (p/n 012-0105). Lane 4: Rat IgM Whole Molecule (p/n 012-0107). Lane 5: Rat Serum (p/n [D310-05]). All samples were reduced. Load: 50 ng per lane. Block: MB-070 for 30 min at RT. Primary Antibody: Anti-Rat IgG (H&L) (DONKEY) Antibody (Min X Bv Ch Gt GP Ham Hs Hu Ms Rb & Sh Serum Proteins) (p/n 612-701-120) 1:10,000 for 60 min at RT. Secondary Antibody: Anti-Donkey IgG (GOAT) Peroxidase Conjugated Antibody (p/n 616-1302) 1:40,000 in MB-070 for 30 min at RT. Predicted/Observed Size: 25 and 55 kDa for Rat IgG and Serum, 25 kDa for F(c) and Fab, 78 and 25 kDa for IgM. Rat F(c) migrates slightly higher.