

Product datasheet for **TA398021**

Rat IgG (H&L) Antibody Biotin Conjugated

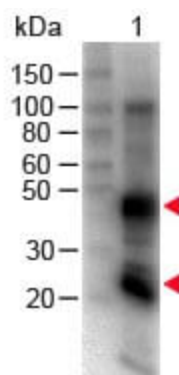
Product data:

| | |
|------------------------|---|
| Product Type: | Secondary Antibodies |
| Product Name: | Rat IgG (H&L) Antibody Biotin Conjugated |
| Applications: | ELISA, IHC, WB |
| Recommended Dilution: | WB: 1:2,000 - 1:10,000 IHC: 1:1,000 - 1:5,000 ELISA: 1:20,000 - 1:100,000 |
| Host: | Goat |
| Immunogen: | Rat IgG whole molecule |
| Formulation: | 0.02 M Potassium Phosphate, 0.15 M Sodium Chloride, pH 7.2 |
| Reconstitution Method: | Restore with deionized water (or equivalent) - Reconstitution Volume: 1.0 mL |
| Concentration: | 2.0 mg/mL - lot specific |
| Conjugation: | Biotin |
| Storage: | Store vial at 4° C prior to restoration. For extended storage aliquot contents and freeze at -20° C or below. Avoid cycles of freezing and thawing. Centrifuge product if not completely clear after standing at room temperature. This product is stable for several weeks at 4° C as an undiluted liquid. Dilute only prior to immediate use. |
| Note: | Anti-RAT IgG Biotin Conjugated antibody has been tested by ELISA and western blot and is suitable for immunoassays where specificity to the Rat immunoglobulin heavy and or light chain regions is desired. Anti-Rat antibody has been assayed against 1.0 µg of Rat IgG in a standard capture ELISA using Peroxidase Conjugated Streptavidin and ABTS (2,2'-azino-bis-[3-ethylbenthiiazoline-6-sulfonic acid]) as a substrate for 30 minutes at room temperature. A working dilution of 1:100,000 to 1:500,000 is suggested for this product. Optimal concentrations in immunoassays should be determined by the researcher. |



[View online »](#)

Product images:



Western Blot of Goat anti-Rat IgG (H&L) Antibody Biotin Conjugated. Lane 1: Rat IgG. Load: 100 ng per lane. Primary antibody: Rat IgG (H&L) Antibody Biotin Conjugated at 1:1000 for 60 min RT. Secondary antibody: HRP Conjugated Streptavidin at 1:40,000 for 30 min at RT. Block: MB-070 for 30 min at RT.