

Product datasheet for **TA398020**

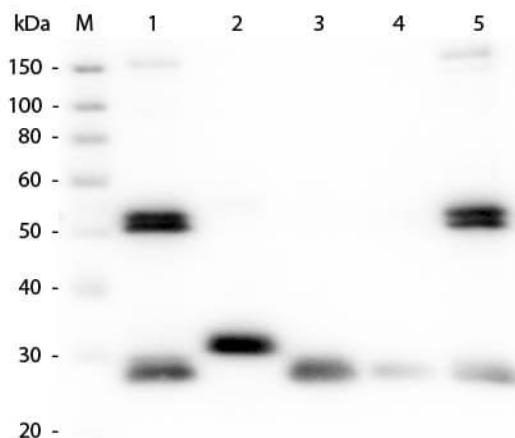
Rat IgG (H&L) Antibody ATTO 655 Conjugated Pre-Adsorbed

Product data:

Product Type:	Secondary Antibodies
Product Name:	Rat IgG (H&L) Antibody ATTO 655 Conjugated Pre-Adsorbed
Applications:	IF, WB
Recommended Dilution:	WB: >1:10,000 IF: >1:5,000 FLISA: >1:20,000
Host:	Goat
Immunogen:	Rat IgG whole molecule
Formulation:	0.02 M Potassium Phosphate, 0.15 M Sodium Chloride, pH 7.2
Reconstitution Method:	Restore with deionized water (or equivalent) - Reconstitution Volume: 500 µL
Concentration:	1.0 mg/mL - lot specific
Conjugation:	ATTO 655
Storage:	Store vial at 4° C prior to restoration. For extended storage aliquot contents and freeze at -20° C or below. Avoid cycles of freezing and thawing. Centrifuge product if not completely clear after standing at room temperature. This product is stable for several weeks at 4° C as an undiluted liquid. Dilute only prior to immediate use.
Note:	Anti-Rat IgG (H&L) conjugated to ATTO 655 has been tested by western blot and is designed for STED microscopy, FRET, immunofluorescence microscopy, fluorescence based plate assays (FLISA) and fluorescent western blotting. The emission spectra for this ATTO conjugate matches the principle output wavelengths of most common fluorescence instrumentation.



[View online »](#)

Product images:


Western Blot of Anti-Rat IgG (H&L) (GOAT) Antibody (Min X Bv Ch Gt GP Ham Hs Hu Ms Rb & Sh Serum Proteins) (p/n 612-101-120). Lane M: 3 μ l Molecular Ladder. Lane 1: Rat IgG whole molecule (p/n 012-0102). Lane 2: Rat IgG F(c) Fragment (p/n 012-0103). Lane 3: Rat IgG Fab Fragment (p/n 012-0105). Lane 4: Rat IgM Whole Molecule (p/n 012-0107). Lane 5: Rat Serum (p/n [D310-05]). All samples were reduced. Load: 50 ng per lane. Block: MB-070 for 30 min at RT. Primary Antibody: Anti-Rat IgG (H&L) (GOAT) Antibody (Min X Bv Ch Gt GP Ham Hs Hu Ms Rb & Sh Serum Proteins) (p/n 612-101-120) 1:1,000 for 60 min at RT. Secondary Antibody: Anti-Goat IgG (DONKEY) Peroxidase Conjugated Antibody (p/n CUST10) 1:40,000 in MB-070 for 30 min at RT. Predicted/Observed Size: 25 and 55 kDa for Rat IgG and Serum, 25 kDa for F(c) and Fab, 78 and 25 kDa for IgM. Rat F(c) migrates slightly higher.