

## Product datasheet for **TA398011**

### Rat IgG F(c) Antibody Alkaline Phosphatase Conjugated

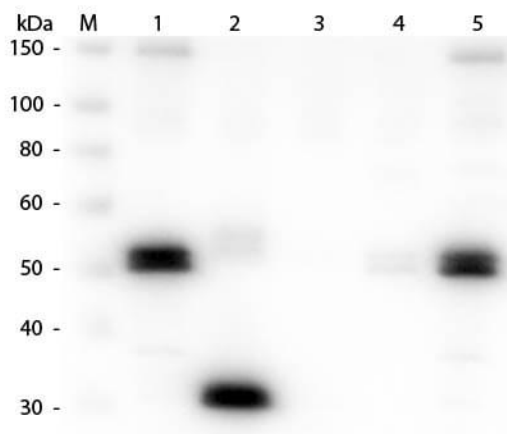
#### Product data:

|                       |   |
|-----------------------|---|
| Product Type:         | Secondary Antibodies  |
| Product Name:         | Rat IgG F(c) Antibody Alkaline Phosphatase Conjugated   |
| Applications:         | ELISA, IHC, WB  |
| Recommended Dilution: | <b>WB:</b> 1:500 - 1:2,500<br><b>IHC:</b> 1:200 - 1:1,000<br><b>ELISA:</b> 1:2,000 - 1:5,000  |
| Host:                 | Goat  |
| Immunogen:            | Rat IgG F(c) fragment   |
| Formulation:          | 0.05 M Tris Chloride, 0.15M Sodium Chloride, 0.001 M Magnesium Chloride, 0.0001M Zinc Chloride, 50% (v/v) Glycerol; pH 8.0  |
| Concentration:        | 1.0 mg/mL - lot specific  |
| Conjugation:          | Alkaline Phosphatase  |
| Storage:              | Store vial at 4° C before opening. DO NOT FREEZE. This product is stable at 4° C as an undiluted liquid. Dilute only prior to immediate use. Freezing alkaline phosphatase conjugates will result in a substantial loss of enzymatic activity.  |
| Note:                 | Anti-Rat F(c) IgG Alkaline Phosphatase conjugate has been tested by ELISA and dot blot and is suitable for immunoblotting (western or dot blot), ELISA, immunoelectron microscopy and immunohistochemistry as well as other antibody-based enzymatic assays requiring lot-to-lot consistency. |



[View online »](#)

## Product images:



Western Blot of Anti-Rat IgG F(c) (GOAT) Antibody (p/n 612-1103). Lane M: 3  $\mu$ l Molecular Ladder. Lane 1: Rat IgG whole molecule (p/n 012-0102). Lane 2: Rat IgG F(c) Fragment (p/n 012-0103). Lane 3: Rat IgG Fab Fragment (p/n 012-0105). Lane 4: Rat IgM Whole Molecule (p/n 012-0107). Lane 5: Rat Serum (p/n [D310-05]). All samples were reduced. Load: 50 ng per lane. Block: MB-070 for 30 min at RT. Primary Antibody: Anti-Rat IgG F(c) (GOAT) Antibody (p/n 612-1103) 1:1,000 for 60 min at RT. Secondary Antibody: Anti-Goat IgG (DONKEY) Peroxidase Conjugated Antibody (p/n CUST10) 1:40,000 in MB-070 for 30 min at RT. Predicted/Observed Size: 25 and 55 kDa for Rat IgG and Serum, 25 kDa for F(c) and Fab, 78 and 25 kDa for IgM. Rat F(c) migrates slightly higher.