

## Product datasheet for **TA398010**

### Rat IgG (H&L) Antibody Alkaline Phosphatase Conjugated

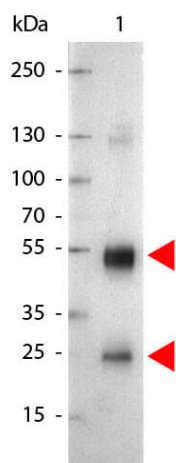
#### Product data:

Product Type:	Secondary Antibodies
Product Name:	Rat IgG (H&L) Antibody Alkaline Phosphatase Conjugated
Applications:	ELISA, IHC, WB
Recommended Dilution:	<b>WB:</b> 1:500 - 1:2,500 <b>IHC:</b> 1:200 - 1:1,000 <b>ELISA:</b> 1:50,000 - 1:90,000
Host:	Goat
Immunogen:	Rat IgG whole molecule
Formulation:	0.05 M Tris Chloride, 0.15M Sodium Chloride, 0.001 M Magnesium Chloride, 0.0001M Zinc Chloride, 50% (v/v) Glycerol; pH 8.0
Concentration:	1.0 mg/mL - lot specific
Conjugation:	Alkaline Phosphatase
Storage:	Store vial at 4° C before opening. DO NOT FREEZE. This product is stable at 4° C as an undiluted liquid. Dilute only prior to immediate use. Freezing alkaline phosphatase conjugates will result in a substantial loss of enzymatic activity.
Note:	Anti-Rat IgG Alkaline Phosphatase antibody has been tested by ELISA, dot blot, and western blot and is suitable for use in immunohistochemistry. Specific conditions for reactivity should be optimized by the end user.



[View online »](#)

## Product images:



Western Blot of Alkaline Phosphatase Conjugated Goat anti-Rat IgG antibody. Lane 1: Rat IgG. Lane 2: none. Load: 50 ng per lane. Primary antibody: none. Secondary antibody: Alkaline Phosphatase rat secondary antibody at 1:1,000 for 60 min at RT. Block: MB-070 for 30 min RT. Predicted/Observed size: 55 kDa, 28 kDa for Rat IgG. Other band(s): none.