

Product datasheet for **TA397999**

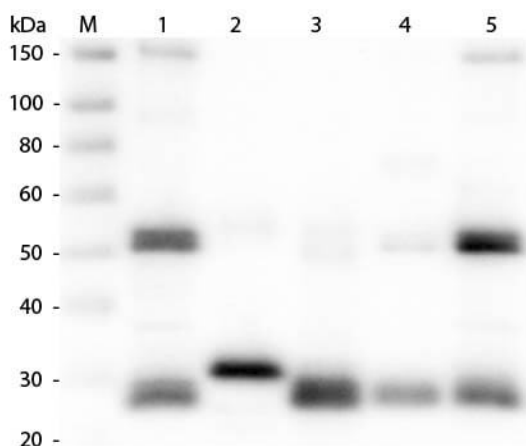
Rat IgG (H&L) Antibody

Product data:

Product Type:	Secondary Antibodies
Product Name:	Rat IgG (H&L) Antibody
Applications:	ELISA, IHC, WB
Recommended Dilution:	WB: 1:2,000-1:10,000 IHC: 1:1,000-1:5,000 ELISA: 1:20,000-1:100,000
Host:	Goat
Immunogen:	Rat IgG whole molecule
Formulation:	0.02 M Potassium Phosphate, 0.15 M Sodium Chloride, pH 7.2
Concentration:	2.0 mg/mL - lot specific
Conjugation:	Unconjugated
Storage:	Store vial at 4° C prior to opening. This product is stable for several weeks at 4° C as an undiluted liquid. Dilute only prior to immediate use. For extended storage aliquot contents and freeze at -20° C or below. Avoid cycles of freezing and thawing.
Note:	Anti-RAT IgG (H&L) (GOAT) Antibody has been tested by ELISA and western blot and is suitable for Immunohistochemistry applications. Specific conditions for reactivity should be optimized by the end user.



[View online »](#)

Product images:


Western Blot of Anti-Rat IgG (H&L) (GOAT) Antibody (p/n 612-1102). Lane M: 3 μ l Molecular Ladder. Lane 1: Rat IgG whole molecule (p/n 012-0102). Lane 2: Rat IgG F(c) Fragment (p/n 012-0103). Lane 3: Rat IgG Fab Fragment (p/n 012-0105). Lane 4: Rat IgM Whole Molecule (p/n 012-0107). Lane 5: Rat Serum (p/n [D310-05]). All samples were reduced. Load: 50 ng per lane. Block: MB-070 for 30 min at RT. Primary Antibody: Anti-Rat IgG (H&L) (GOAT) Antibody (p/n 612-1102) 1:1,000 for 60 min at RT. Secondary Antibody: Anti-Goat IgG (DONKEY) Peroxidase Conjugated Antibody (p/n CUST10) 1:40,000 in MB-070 for 30 min at RT. Predicted/Observed Size: 25 and 55 kDa for Rat IgG and Serum, 25 kDa for F(c) and Fab, 78 and 25 kDa for IgM. Rat F(c) migrates slightly higher.