

Product datasheet for **TA397987**

Rabbit IgG (H&L) Antibody

Product data:

Product Type: Secondary Antibodies

Product Name: Rabbit IgG (H&L) Antibody

Applications: ELISA, IHC, WB

Recommended Dilution: **WB:** 1:2,000 - 1:10,000
IHC: 1:1,000 - 1:5,000
ELISA: 1:40,000 - 1:160,000

Host: Donkey

Immunogen: Rabbit IgG whole molecule

Formulation: 0.02 M Potassium Phosphate, 0.15 M Sodium Chloride, pH 7.2

Concentration: 2.16 mg/mL - lot specific

Conjugation: Unconjugated

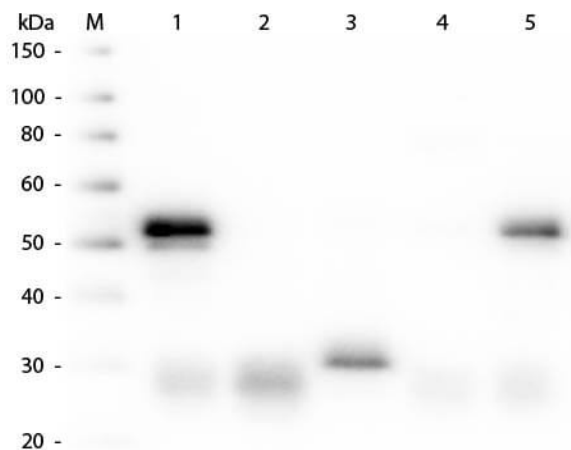
Storage: Store vial at 4° C prior to opening. This product is stable for several weeks at 4° C as an undiluted liquid. Dilute only prior to immediate use. For extended storage aliquot contents and freeze at -20° C or below. Avoid cycles of freezing and thawing.

Note: Anti-Rabbit IgG antibody has been tested by ELISA and is suitable for ELISA, western blot, and immunohistochemistry, as well as other assays requiring lot-to-lot consistency.



[View online »](#)

Product images:



Western Blot of Anti-Rabbit IgG (H&L) (DONKEY) Antibody Peroxidase Conjugated (p/n 611-7302). Lane M: 3 μ l Molecular Ladder. Lane 1: Rabbit IgG whole molecule (p/n 011-0102). Lane 2: Rabbit IgG F(ab) Fragment (p/n 011-0105). Lane 3: Rabbit IgG F(c) Fragment (p/n 010-0103). Lane 4: Rabbit IgM Whole Molecule (p/n 011-0107). Lane 5: Normal Rabbit Serum (p/n B309). All samples were reduced. Load: 50 ng per lane. Block: MB-070 for 30 min at RT. Primary Antibody: Anti-Rabbit IgG (H&L) (DONKEY) Antibody Peroxidase Conjugated (p/n 611-7302) 1:5,000 for 60 min at RT. Secondary antibody: None. Predicted/Observed Size: 25 and 50 kDa for Rabbit IgG and Serum, 25 kDa for F(c) and F(ab), 70 and 23 kDa for IgM. Rabbit F(c) migrates slightly higher.