

## Product datasheet for **TA397969**

### Rabbit IgG (H&L) Antibody Alkaline Phosphatase Conjugated Pre-Adsorbed

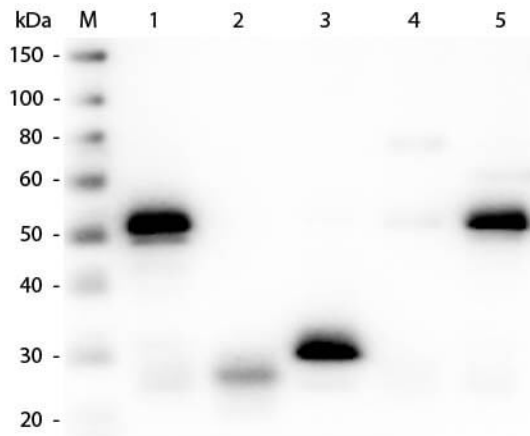
#### Product data:

Product Type:	Secondary Antibodies
Product Name:	Rabbit IgG (H&L) Antibody Alkaline Phosphatase Conjugated Pre-Adsorbed
Applications:	ELISA, IHC, WB
Recommended Dilution:	<b>WB:</b> 1:500 - 1:2,500 <b>IHC:</b> 1:200 - 1:1,000 <b>ELISA:</b> 1:2,000 - 1:10,000
Host:	Sheep
Immunogen:	Rabbit IgG whole molecule
Formulation:	0.05 M Tris Chloride, 0.15M Sodium Chloride, 0.001 M Magnesium Chloride, 0.0001M Zinc Chloride, 50% (v/v) Glycerol; pH 8.0
Concentration:	1.0 mg/mL - lot specific
Conjugation:	Alkaline Phosphatase
Storage:	Store vial at 4° C before opening. DO NOT FREEZE. This product is stable at 4° C as an undiluted liquid. Dilute only prior to immediate use. Freezing alkaline phosphatase conjugates will result in a substantial loss of enzymatic activity.
Note:	This product has been assayed against 1.0 ug of Rabbit IgG in a standard capture ELISA using pNPP p-nitrophenyl phosphate code # NPP-10 as a substrate for 30 minutes at room temperature. A working dilution of 1:4,000 to 1:16,000 is suggested for this product.



[View online »](#)

## Product images:



Western Blot of Anti-Rabbit IgG (H&L) (SHEEP) Antibody (Min X Hu, Gt, Ms Serum Proteins) (p/n 611-6102). Lane M: 3  $\mu$ l Molecular Ladder. Lane 1: Rabbit IgG whole molecule (p/n 011-0102). Lane 2: Rabbit IgG F(ab) Fragment (p/n 011-0105). Lane 3: Rabbit IgG F(c) Fragment (p/n 010-0103). Lane 4: Rabbit IgM Whole Molecule (p/n 011-0107). Lane 5: Normal Rabbit Serum (p/n B309). All samples were reduced. Load: 50 ng per lane. Block: MB-070 for 30 min at RT. Primary Antibody: Anti-Rabbit IgG (H&L) (SHEEP) Antibody (Min X Hu, Gt, Ms Serum Proteins) (p/n 611-6102) 1:3,000 for 60 min at RT. Secondary antibody: Anti-Sheep IgG (DONKEY) Peroxidase Conjugated Antibody (p/n 613-703-168) 1:40,000 in MB-070 for 30 min at RT. Predicted/Observed Size: 25 and 50 kDa for Rabbit IgG and Serum, 25 kDa for F(c) and F(ab), 70 and 23 kDa for IgM. Rabbit F(c) migrates slightly higher.