

## Product datasheet for **TA397877**

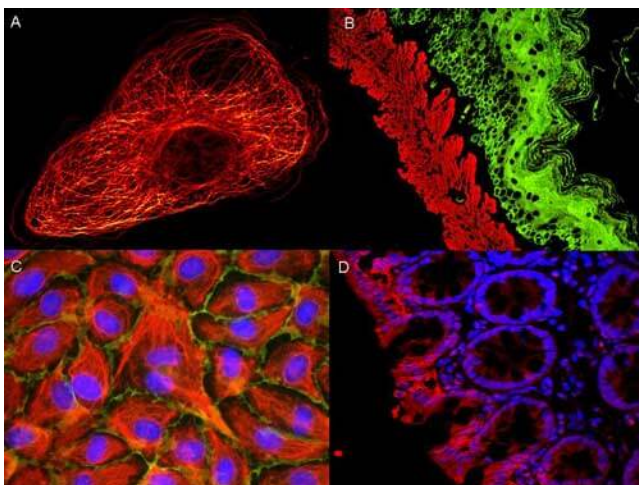
### Mouse IgG2a Antibody ATTO 550 Conjugated Pre-adsorbed

#### Product data:

Product Type:	Secondary Antibodies
Product Name:	Mouse IgG2a Antibody ATTO 550 Conjugated Pre-adsorbed
Applications:	FC, IF, IHC, WB
Recommended Dilution:	<b>WB:</b> >1:10,000 <b>IHC:</b> >1:5,000 <b>IF:</b> >1:5,000 <b>FC:</b> 1:500 - 1:2,500 <b>FLISA:</b> >1:20,000
Reactivity:	Mouse
Host:	Goat
Immunogen:	Mouse IgG2a heavy chain
Formulation:	0.02 M Potassium Phosphate, 0.15 M Sodium Chloride, pH 7.2
Reconstitution Method:	Restore with deionized water (or equivalent) - Reconstitution Volume: 500 µL
Concentration:	1.0 mg/mL - lot specific
Conjugation:	ATTO 550
Storage:	Store vial at 4° C prior to restoration. For extended storage aliquot contents and freeze at -20° C or below. Avoid cycles of freezing and thawing. Centrifuge product if not completely clear after standing at room temperature. This product is stable for several weeks at 4° C as an undiluted liquid. Dilute only prior to immediate use.
Note:	Mouse IgG2a secondary antibody is available in a variety of formats. Anti-Mouse IgG2a ATTO 550 Antibody has been tested by dot blot and is designed for STED microscopy, FRET, immunofluorescence microscopy, fluorescence based plate assays (FLISA) and fluorescent western blotting. This product is also suitable for multiplex analysis, including multicolor imaging, utilizing various commercial platforms. Anti-Mouse IgG2a secondary antibody is suitable for ELISA, Immunohistochemistry western blotting as well as other anti IgG2a antibody based assays. The emission spectra for this ATTO conjugate matches the principle output wavelengths of most common fluorescence instrumentation.



[View online »](#)

**Product images:**

ATTO® dyes can be used for multicolor immunofluorescent detection with low background and high signal. Examples shown are: A. Tubulin in PtK2- male Rat Kangaroo Kidney Epithelial Cells was detected using ATTO 532 labeled secondary antibody. B. Muscle alpha-actin was stained with a mouse primary antibody and ATTO 488 anti-mouse IgG (green) while Cytokeratin was stained with polyclonal rabbit anti-cytokeratin and ATTO 647N anti-rabbit IgG (red). C. HUVEC (Human umbilical vein endothelial cells) were stained with anti- Vimentin- ATTO 532 (green), anti-E-Cadherin-ATTO 655 (red) and DAPI (blue). D. Rat colon sections were stained with Anti-Aquaporin 3-ATTO 594 antibody. Hoechst 33342 (blue) is used as counterstain. Images provided courtesy of Dr. Jörg Reichwein, ATTO-TEC GmbH