

## Product datasheet for **TA397846**

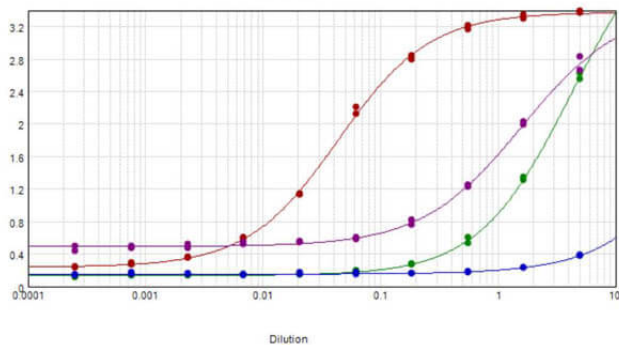
### Mouse IgG (H&L) Antibody Pre-Adsorbed

#### Product data:

Product Type:	Secondary Antibodies
Product Name:	Mouse IgG (H&L) Antibody Pre-Adsorbed
Applications:	ELISA, IHC, WB
Recommended Dilution:	<b>WB:</b> 1:10,000 - 1:50,000 <b>IHC:</b> 1:5,000 - 1:25,000 <b>ELISA:</b> 1:100,000 - 1:500,000
Reactivity:	Mouse
Host:	Goat
Immunogen:	Mouse IgG whole molecule
Formulation:	0.02 M Potassium Phosphate, 0.15 M Sodium Chloride, pH 7.2
Concentration:	8.6 mg/mL - lot specific
Conjugation:	Unconjugated
Storage:	Store vial at 4° C prior to opening. This product is stable for several weeks at 4° C as an undiluted liquid. Dilute only prior to immediate use. For extended storage aliquot contents and freeze at -20° C or below. Avoid cycles of freezing and thawing.
Note:	Anti-Mouse IgG antibody has been tested by ELISA and is suitable for ELISA, western blot, and immunohistochemistry, as well as other assays requiring lot-to-lot consistency.



[View online »](#)

**Product images:**

ELISA results of purified Goat anti-Mouse IgG Antibody Min X human serum tested against purified Mouse IgG. Each well was coated in duplicate with 1.0  $\mu\text{g}$  of Mouse IgG [red line], Human IgG [green line]. The starting dilution of antibody was 5  $\mu\text{g}/\text{ml}$  and the X-axis represents the Log10 of a 3-fold dilution. This titration is a 4-parameter curve fit where the IC50 is defined as the titer of the antibody. Assay performed using Blocking buffer MB-060-1000, Gt-anti-Donkey HRP conjugate 616-1302, and TMB-1000 substrate.