

Product datasheet for **TA397845**

Mouse IgM (mu chain) Antibody

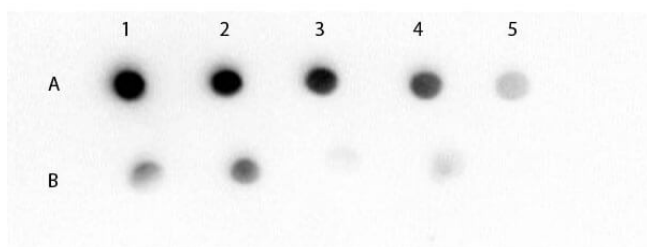
Product data:

Product Type:	Secondary Antibodies
Product Name:	Mouse IgM (mu chain) Antibody
Applications:	ELISA, IHC, WB
Recommended Dilution:	WB: 1:2,000 - 1:10,000 IHC: 1:1,000 - 1:5,000 ELISA: 1:20,400 - 1:40,400
Reactivity:	Mouse
Host:	Goat
Immunogen:	Mouse IgM whole molecule
Formulation:	0.02 M Potassium Phosphate, 0.15 M Sodium Chloride, pH 7.2
Concentration:	2.20 mg/mL - lot specific
Conjugation:	Unconjugated
Storage:	Store vial at 4° C prior to opening. This product is stable for several weeks at 4° C as an undiluted liquid. Dilute only prior to immediate use. For extended storage aliquot contents and freeze at -20° C or below. Avoid cycles of freezing and thawing.
Note:	Anti-Mouse IgM (mu chain) has been tested by ELISA, dot blot, and western blot and is suitable for immunoblotting (western or dot blot), ELISA, and immunohistochemistry assays requiring lot-to-lot consistency.



[View online »](#)

Product images:



Dot Blot of Mouse IgM (mu chain) (GOAT) Antibody. Lane 1A: Mouse IgM (100 ng). Lane 1B: Mouse IgG (100 ng). Lanes 2-5: serial 3-fold dilution. Primary Antibody: Mouse IgM (mu chain) Antibody at 1 μ g/mL at RT for 60 minutes. Secondary Antibody: Donkey Anti-Goat IgG Antibody HRP Conj'd (p/n 605-703-125) at 1;40,000 dilution of 1 mg/mL at RT for 30 minutes. Block: MB-070 at RT for 30 min.