

Product datasheet for **TA397839**

Mouse IgG (H&L) Antibody Phycoerythrin Conjugated Pre-Adsorbed

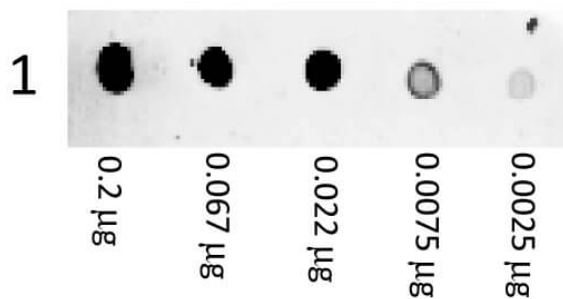
Product data:

Product Type:	Secondary Antibodies
Product Name:	Mouse IgG (H&L) Antibody Phycoerythrin Conjugated Pre-Adsorbed
Applications:	FC, IF
Recommended Dilution:	IF: 1:100 - 1:250 FC: 1:100 - 1:250
Reactivity:	Mouse
Host:	Goat
Immunogen:	Anti-Mouse IgG was produced by repeated immunization with Mouse IgG whole molecule in goat.
Formulation:	0.02 M Potassium Phosphate, 0.15 M Sodium Chloride, pH 7.2
Reconstitution Method:	Restore with deionized water (or equivalent) - Reconstitution Volume: 1.0 mL
Concentration:	0.5 mg/mL - lot specific
Conjugation:	Phycoerythrin
Storage:	Store vial at 4° C prior to restoration. Restore with deionized water (or equivalent). This product is stable at 4° C as an undiluted liquid. Dilute only prior to immediate use. Centrifuge product if not completely clear after standing at room temperature. Do not freeze after reconstitution. Store reagent in the dark. Use subdued lighting during handling and incubation of cells prior to analysis.
Note:	Anti-Mouse IgG (H&L) Phycoerythrin conjugated antibody has been tested by western blot and dot blot and is suitable for immunomicroscopy and flow cytometry or FACS analysis as well as other antibody based fluorescent assays requiring extremely low background levels, absence of F(c) mediated binding, lot-to-lot consistency, high titer and specificity. The maximum amount of reagent required to stain 1 x 10E6 cells in flow cytometry is approximately 1.0 µg of antibody conjugate. Lesser amounts of reagent may be sufficient for staining. Optimal titers for other applications should be determined by the researcher. As a general guideline dilutions of 1:100 to 1:250 should be suitable for most applications.



[View online »](#)

Product images:



Dot Blot of Goat anti-Mouse IgG Antibody Phycoerythrin Conjugated. Antigen: Mouse IgG. Load: 3-fold serial dilution starting at 200 ng. Primary antibody: None. Secondary antibody: Phycoerythrin goat secondary antibody at 1:1,000 for 60 min at RT. Block: 5% BLOTTO 1 Hour at RT.