

Product datasheet for **TA397831**

Mouse IgG (H&L) Secondary Antibody Alkaline Phosphatase Conjugated Pre-Adsorbed

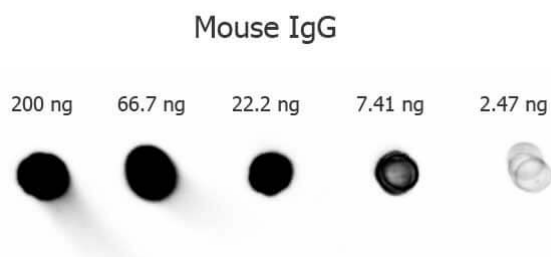
Product data:

Product Type:	Secondary Antibodies
Product Name:	Mouse IgG (H&L) Secondary Antibody Alkaline Phosphatase Conjugated Pre-Adsorbed
Applications:	ELISA, IHC, WB
Recommended Dilution:	WB: 1:500 - 1:2,500 IHC: 1:200 - 1:1,000 ELISA: 1:2,000 - 1:10,000
Reactivity:	Mouse
Host:	Goat
Immunogen:	Mouse IgG whole molecule
Formulation:	0.05 M Tris Chloride, 0.15M Sodium Chloride, 0.001 M Magnesium Chloride, 0.0001M Zinc Chloride, 50% (v/v) Glycerol; pH 8.0
Concentration:	1.0 mg/ml - lot specific
Conjugation:	Alkaline Phosphatase
Storage:	Store secondary antibody at 4° C before opening. DO NOT FREEZE. Conjugated antibody is stable at 4° C as an undiluted liquid. Dilute only prior to immediate use. Freezing alkaline phosphatase conjugates will result in a substantial loss of enzymatic activity.
Note:	Anti-Mouse IgG Alkaline Phosphatase Antibody has been tested by ELISA an dot blot and is ideal for western blot, Immunohistochemistry and ELISA as well as other antibody detection methods; and are available in a variety of formats and conjugate types.



[View online »](#)

Product images:



Dot Blot of Goat anti-Mouse IgG antibody Alkaline Phosphatase Conjugated (Min X Bv Ch Gt GP Ham Hs Hu Rb Rt & Sh Serum Proteins. Antigen: Mouse IgG. Load: 200 ng, 66.7 ng, 22.2 ng, 7.41 ng, or 2.47 ng as indicated. Primary antibody: Anti-Mouse IgG antibody Alkaline Phosphatase Conjugated at 1:1,000 for 60 min at 4°C. Secondary antibody: N/A. Block: Blocking Buffer for Fluorescent Western Blotting (MB-070) for 60 min at RT.