

Product datasheet for **TA397818**

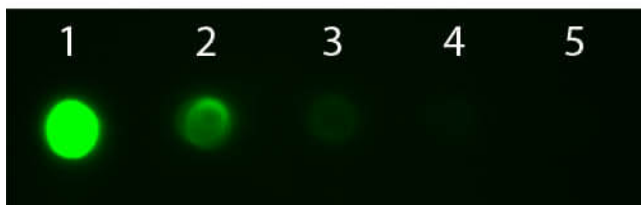
Mouse IgG2a Antibody Fluorescein Conjugated Pre-adsorbed

Product data:

Product Type:	Secondary Antibodies
Product Name:	Mouse IgG2a Antibody Fluorescein Conjugated Pre-adsorbed
Applications:	FC, IF, IHC, WB
Recommended Dilution:	WB: 1:2,000 - 1:10,000 IHC: 1:1,000 - 1:5,000 IF: 1:1,000 - 1:5,000 FC: 1:200 - 1:500 FLISA: 1:10,000 - 1:50,000
Reactivity:	Mouse
Host:	Goat
Immunogen:	Mouse IgG2a heavy chain
Formulation:	0.02 M Potassium Phosphate, 0.15 M Sodium Chloride, pH 7.2
Reconstitution Method:	Restore with deionized water (or equivalent) - Reconstitution Volume: 1.0 mL
Concentration:	1.7 mg/ml - lot specific
Conjugation:	FITC
Storage:	Store anti mouse secondary antibody at 4° C prior to restoration. For extended storage aliquot antibody and freeze at -20° C or below. Avoid cycles of freezing and thawing. Centrifuge product if not completely clear after standing at room temperature. This product is stable for several weeks at 4° C as an undiluted liquid. Dilute only prior to immediate use.
Note:	Mouse IgG2a Fluorescein antibody has been tested by dot blot and is available in a variety of formats. FITC Conjugated Secondary Antibodies are designed for immunofluorescence microscopy, fluorescence based plate assays (FLISA) and fluorescent western blotting. This product is also suitable for multiplex analysis, including multicolor imaging, utilizing various commercial platforms.



[View online »](#)

Product images:

Dot Blot of Goat anti-Mouse IgG2a Antibody Fluorescein Conjugated Pre-adsorbed. Antigen: Mouse IgG2a. Load: Lane 1 - 100 ng Lane 2 - 33.3 ng Lane 3 - 11.1 ng Lane 4 - 3.70 ng Lane 5 - 1.23 ng. Primary antibody: n/a. Secondary antibody: Goat anti-Mouse IgG2a Antibody Fluorescein Conjugated Pre-adsorbed at 1:1,000 for 60 min at RT. Block: MB-070 for 60 min at RT.