

Product datasheet for **TA397817**

Mouse IgG1 Antibody Fluorescein Conjugated Pre-adsorbed

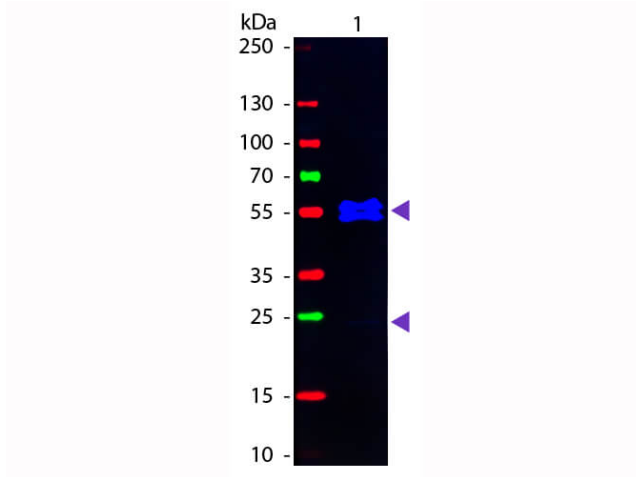
Product data:

Product Type:	Secondary Antibodies
Product Name:	Mouse IgG1 Antibody Fluorescein Conjugated Pre-adsorbed
Applications:	FC, IF, IHC, WB
Recommended Dilution:	WB: 1:2,000 - 1:10,000 IHC: 1:1,000 - 1:5,000 IF: 1:1,000 - 1:5,000 FC: 1:200 - 1:500 FLISA: 1:10,000 - 1:50,000
Reactivity:	Mouse
Host:	Goat
Immunogen:	Mouse IgG heavy chain
Formulation:	0.02 M Potassium Phosphate, 0.15 M Sodium Chloride, pH 7.2
Reconstitution Method:	Restore with deionized water (or equivalent) - Reconstitution Volume: 1.0 mL
Concentration:	1.0 mg/mL - lot specific
Conjugation:	FITC
Storage:	Store vial at 4° C prior to restoration. For extended storage aliquot antibody and freeze at -20° C or below. Avoid cycles of freezing and thawing. Centrifuge product if not completely clear after standing at room temperature. This product is stable for several weeks at 4° C as an undiluted liquid. Dilute only prior to immediate use.
Note:	Mouse IgG1 FITC conjugated secondary antibody has been tested by western blot and is ideal for Flow Cytometry, Immunohistochemistry and Immunofluorescence Microscopy as well as other antibody detection methods. This product is also suitable for multiplex analysis, including multicolor imaging, utilizing various commercial platforms.



[View online »](#)

Product images:



Western Blot of Fluorescein conjugated Goat anti-Mouse IgG1 (Gamma 1 chain) Pre-adsorbed secondary antibody. Lane 1: Mouse IgG1. Lane 2: none. Load: 50 ng per lane. Primary antibody: none. Secondary antibody: Fluorescein goat secondary antibody at 1:1,000 for 60 min at RT. Block: MB-070 for 30 min at RT. Predicted/Observed size: 55 kDa, 55 kDa for Mouse IgG1 (Gamma 1 chain). Other band(s): none.