

Product datasheet for **TA397814**

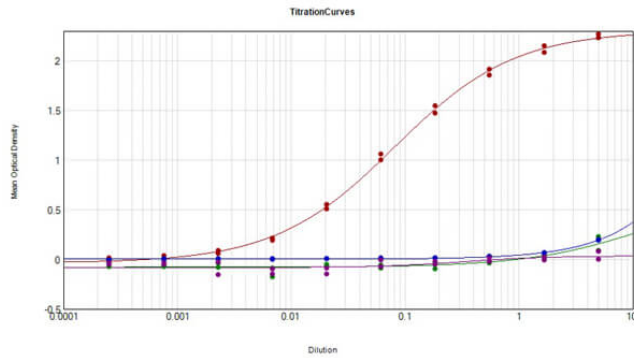
Mouse IgG (H&L) Antibody Pre-adsorbed

Product data:

Product Type:	Secondary Antibodies
Product Name:	Mouse IgG (H&L) Antibody Pre-adsorbed
Applications:	ELISA, IHC, WB
Recommended Dilution:	WB: 1:2,000 - 1:20,000 IHC: 1:1,000 - 1:5,000 ELISA: 1:50,000 - 1:100,000
Reactivity:	Mouse
Host:	Goat
Immunogen:	Anti-Mouse IgG whole molecule was produced by repeated immunization with Mouse IgG whole molecule in goat.
Formulation:	0.02 M Potassium Phosphate, 0.15 M Sodium Chloride, pH 7.2
Concentration:	0.95 mg/mL - lot specific
Conjugation:	Unconjugated
Storage:	Store vial at 4° C prior to opening. This product is stable for several weeks at 4° C as an undiluted liquid. Dilute only prior to immediate use. For extended storage aliquot contents and freeze at -20° C or below. Avoid cycles of freezing and thawing.
Note:	Anti-Mouse IgG has been tested by ELISA and is suitable for use in immunoelectrophoresis, western-blot, competitive western-blot, ELISA and competitive ELISA assays. Specific conditions for reactivity and signal detection should be optimized by the end user.



[View online »](#)

Product images:

ELISA Results of Goat Anti-Mouse IgG (H&L) Antibody (Min X Bv Ch Gt GP Ham Hs Hu Rb Rt & Sh Serum Proteins) tested against purified Mouse IgG mx10. Each well was coated in duplicate with 1.0 μ g of Mouse IgG (p/n 010-0102) [Red Line], Bovine IgG (p/n 001-0102) [Green Line], Chicken IgG (p/n 003-0102) [Blue Line], Goat IgG (p/n 005-0102) [Purple Line], Guinea Pig IgG (p/n 006-0102), Hamster IgG (p/n 007-0102), Horse IgG (p/n 008-0102), Human IgG (p/n 009-0102), Rabbit IgG (p/n 011-0102), Rat IgG (p/n 012-0102), and Sheep IgG (p/n 013-0102). The starting dilution of antibody was 5 μ g/ml and the X-axis represents the Log10 of a 3-fold dilution. This titration is a 4-parameter curve fit where the IC50 is defined as the titer of the antibody. Assay performed using TMB substrate (p/n TMBE-1000).