

Product datasheet for **TA397800**

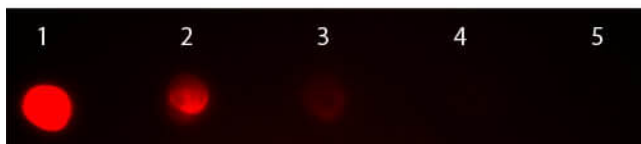
Mouse IgG2a Antibody Rhodamine Conjugated Pre-adsorbed

Product data:

Product Type:	Secondary Antibodies
Product Name:	Mouse IgG2a Antibody Rhodamine Conjugated Pre-adsorbed
Applications:	IF, IHC, WB
Recommended Dilution:	WB: 1:2,000 - 1:10,000 IHC: 1:1,000 - 1:5,000 IF: 1:1,000 - 1:5,000 FLISA: 1:20,000 - 1:100,000
Reactivity:	Mouse
Host:	Goat
Immunogen:	Mouse IgG2a heavy chain
Formulation:	0.02 M Potassium Phosphate, 0.15 M Sodium Chloride, pH 7.2
Reconstitution Method:	Restore with deionized water (or equivalent) - Reconstitution Volume: 1.0 mL
Concentration:	1.0 mg/mL - lot specific
Conjugation:	TRITC
Storage:	Store vial at 4° C prior to restoration. For extended storage aliquot contents and freeze at -20° C or below. Avoid cycles of freezing and thawing. Centrifuge product if not completely clear after standing at room temperature. This product is stable for several weeks at 4° C as an undiluted liquid. Dilute only prior to immediate use.
Note:	Anti-Mouse IgG2a Rhodamine conjugated antibody has been tested by dot blot and is suitable for ELISA, Immunohistochemistry western blotting as well as other anti IgG2a antibody based assays. This product is also suitable for multiplex analysis, including multicolor imaging, utilizing various commercial platforms.



[View online »](#)

Product images:

Dot Blot of Goat anti-Mouse IgG2a Antibody Rhodamine Conjugated Pre-adsorbed. Antigen: Mouse IgG2a. Load: Lane 1 - 200 ng Lane 2 - 66.7 ng Lane 3 - 22.2 ng Lane 4 - 7.41 ng Lane 5 - 2.47 ng. Primary antibody: n/a. Secondary antibody: Goat anti-Mouse IgG2a Antibody Rhodamine Conjugated Pre-adsorbed at 1:1,000 overnight at 4°C. Block: MB-070 for 1 HR at RT.