

Product datasheet for **TA397775**

Human IgG (H&L) Antibody Fluorescein Conjugated

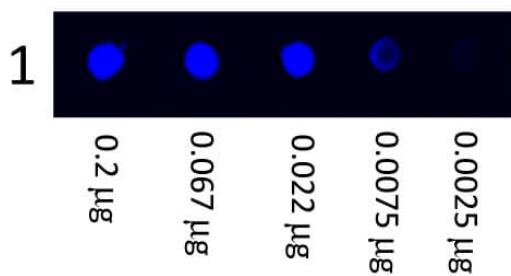
Product data:

Product Type:	Secondary Antibodies
Product Name:	Human IgG (H&L) Antibody Fluorescein Conjugated
Applications:	FC, IF
Recommended Dilution:	IF: 1:1,000 - 1:5,000 FC: 1:500 - 1:2,500 FLISA: 1:10,000 - 1:50,000
Reactivity:	Human
Host:	Mouse
Immunogen:	Human IgG whole molecule
Formulation:	0.02 M Potassium Phosphate, 0.15 M Sodium Chloride, pH 7.2
Reconstitution Method:	Restore with deionized water (or equivalent) - Reconstitution Volume: 1.0 mL
Concentration:	1.0 mg/mL - lot specific
Conjugation:	FITC
Storage:	Store vial at 4° C prior to restoration. For extended storage aliquot contents and freeze at -20° C or below. Avoid cycles of freezing and thawing. Centrifuge product if not completely clear after standing at room temperature. This product is stable for several weeks at 4° C as an undiluted liquid. Dilute only prior to immediate use.
Note:	Mouse Anti-Human IgG (H&L) Antibody Fluorescein Conjugated has been tested by dot blot and is designed for immunofluorescence microscopy, fluorescence based plate assays (FLISA) and fluorescent western blotting. This product is also suitable for multiplex analysis, including multicolor imaging, utilizing various commercial platforms.



[View online »](#)

Product images:



Dot Blot showing the detection of Human IgG. A three-fold serial dilution of Human IgG starting at 200ng was spotted onto 0.45 µm nitrocellulose. After blocking in 5% Blotto (p/n [B501-0500]) 1 Hour at 20°C, Anti-Human IgG (H&L) (MOUSE) Antibody Fluorescein Conjugated (p/n 609-302-002) secondary antibody was used at 1:1000 in Blocking Buffer for Fluorescent Western Blotting (p/n MB-070) and imaged using the Bio-Rad VersaDoc® 4000 MP.