

Product datasheet for **TA397774**

Human IgG (H&L) Antibody

Product data:

Product Type: Secondary Antibodies

Product Name: Human IgG (H&L) Antibody

Applications: ELISA, IHC, WB

Recommended Dilution: **WB:** 1:500 - 1:5,000
IHC: 1:1,000 - 1:5,000
ELISA: 1:5,000 - 1:50,000

Reactivity: Human

Host: Mouse

Immunogen: Human IgG whole molecule

Formulation: 0.02 M Potassium Phosphate, 0.15 M Sodium Chloride, pH 7.2

Concentration: 1.0 mg/mL - lot specific

Conjugation: Unconjugated

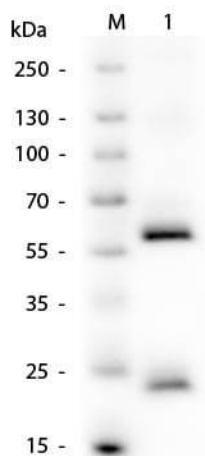
Storage: Store vial at 4° C prior to opening. This product is stable for several weeks at 4° C as an undiluted liquid. Dilute only prior to immediate use. For extended storage aliquot contents and freeze at -20° C or below. Avoid cycles of freezing and thawing.

Note: Mouse Anti-Human IgG (H&L) has been tested by ELISA and western blot and is suitable for use in immunoelectrophoresis, western-blot, competitive western-blot, ELISA and competitive ELISA assays. Specific conditions for reactivity and signal detection should be optimized by the end user.



[View online »](#)

Product images:



Western Blot of Human IgG Antibody. M: 3 μ L Opal Prestained Ladder (MB-210-0500). Lane 1: Human IgG (p/n 009-0102). Load: 50 ng per lane. Primary antibody: Human IgG Antibody at 1:1,000 overnight at 4°C. Secondary antibody: Peroxidase conjugated mouse secondary antibody at 1:40,000 for 30 minutes at RT. Block: (p/n MB-070) for 30 minutes at RT. Predicted/Observed size: 55 kDa, 25 kDa for Human IgG.