

Product datasheet for **TA397773**

Human IgG (H&L) Antibody Rhodamine Conjugated

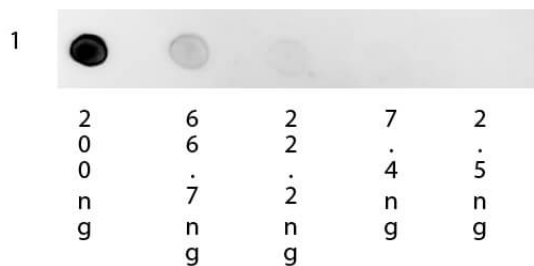
Product data:

Product Type:	Secondary Antibodies
Product Name:	Human IgG (H&L) Antibody Rhodamine Conjugated
Applications:	IF
Recommended Dilution:	IF: 1:500-1:2,500
Reactivity:	Human
Host:	Mouse
Immunogen:	Human IgG whole molecule
Formulation:	0.02 M Potassium Phosphate, 0.15 M Sodium Chloride, pH 7.2
Reconstitution Method:	Restore with deionized water (or equivalent) - Reconstitution Volume: 1.0 mL
Concentration:	1.0 mg/mL - lot specific
Conjugation:	TRITC
Storage:	Store vial at 4° C prior to restoration. For extended storage aliquot contents and freeze at -20° C or below. Avoid cycles of freezing and thawing. Centrifuge product if not completely clear after standing at room temperature. This product is stable for several weeks at 4° C as an undiluted liquid. Dilute only prior to immediate use.
Note:	Mouse Anti-Human IgG Rhodamine conjugated has been tested by dot blot and is designed for immunofluorescence microscopy, fluorescence based plate assays (FLISA) and fluorescent western blotting. This product is also suitable for multiplex analysis, including multicolor imaging, utilizing various commercial platforms.



[View online »](#)

Product images:



Dot Blot of Mouse Anti-Human IgG Rhodamine Conjugated Secondary Antibody. Antigen: Human IgG. Load: 3-fold serial dilution starting at 200 ng. Primary antibody: None. Secondary antibody: Rhodamine mouse secondary antibody at 1:1000 for 1H at RT. Block: MB-070 for 1 H at RT.