

Product datasheet for **TA397761**

Human (kappa chain) Antibody Biotin Conjugated

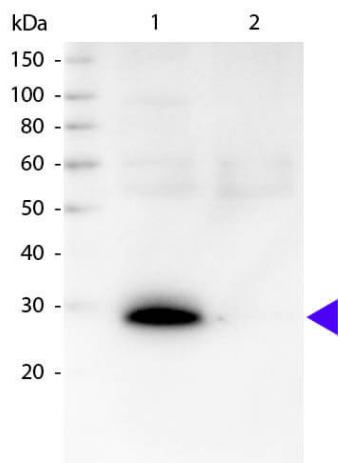
Product data:

Product Type:	Secondary Antibodies
Product Name:	Human (kappa chain) Antibody Biotin Conjugated
Applications:	ELISA, IHC, WB
Recommended Dilution:	WB: 1:2,000 - 1:10,000 IHC: 1:1,000 - 1:5,000 ELISA: 1:200,000
Host:	Goat
Immunogen:	Human kappa light chain
Formulation:	0.02 M Potassium Phosphate, 0.15 M Sodium Chloride, pH 7.2
Reconstitution Method:	Restore with deionized water (or equivalent) - Reconstitution Volume: 1.0 mL
Concentration:	1.0 mg/mL - lot specific
Conjugation:	Biotin
Storage:	Store vial at 4° C prior to restoration. For extended storage aliquot contents and freeze at -20° C or below. Avoid cycles of freezing and thawing. Centrifuge product if not completely clear after standing at room temperature. This product is stable for several weeks at 4° C as an undiluted liquid. Dilute only prior to immediate use.
Note:	Anti-Human K Biotin Conjugated Antibody has been tested by ELISA and Western Blot and is suitable for ELISA, Western Blot and Immunohistochemistry. Specific conditions for reactivity should be optimized by the end user.



[View online »](#)

Product images:



Western blot of Biotin conjugated Goat Anti-Human κ secondary antibody. Lane 1: Human κ . Lane 2: Human λ . Load: 50 ng per lane. Primary antibody: None. Secondary antibody: Biotin rabbit secondary antibody at 1:1,000 for 60 min at RT. Blocking: MB-070 for 30 min at RT. Predicted/Observed size: 28 kDa, 28 kDa for Human κ . Other band(s): None.