

Product datasheet for **TA397756**

Human IgG gamma Antibody Alkaline Phosphatase

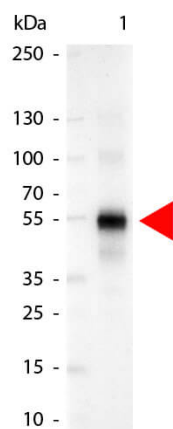
Product data:

Product Type:	Secondary Antibodies
Product Name:	Human IgG gamma Antibody Alkaline Phosphatase
Applications:	ELISA, IHC, WB
Recommended Dilution:	WB: 1:500 - 1:2,500 IHC: 1:200 - 1:1,000 ELISA: 1:4,000 - 1:16,000
Host:	Goat
Immunogen:	Human IgG gamma heavy chain
Formulation:	0.05 M Tris Chloride, 0.15M Sodium Chloride, 0.001M Magnesium Chloride, 0.0001M Zinc Chloride, 50% (v/v) Glycerol; pH 8.0
Concentration:	1.0 mg/mL - lot specific
Conjugation:	Unconjugated
Storage:	Store vial at 4° C before opening. DO NOT FREEZE. This product is stable at 4° C as an undiluted liquid. Dilute only prior to immediate use. Freezing alkaline phosphatase conjugates will result in a substantial loss of enzymatic activity.
Note:	Anti-Human IgG Alkaline Phosphatase has been tested by ELISA and western blot and is suitable for use in immunoelectrophoresis, western-blot, competitive western-blot, ELISA and competitive ELISA assays. Specific conditions for reactivity and signal detection should be optimized by the end user.



[View online »](#)

Product images:



Western Blot of Alkaline Phosphatase Conjugated Goat anti-Human IgG Gamma Chain antibody. Lane 1: Human IgG. Lane 2: none. Load: 50 ng per lane. Primary antibody: none. Secondary antibody: Alkaline Phosphatase human secondary antibody at 1:1,000 for 60 min at RT. Block: MB-070 for 30 min RT. Predicted/Observed size: 55 kDa for Human IgG Gamma Chain. Other band(s): none.