

Product datasheet for **TA397753**

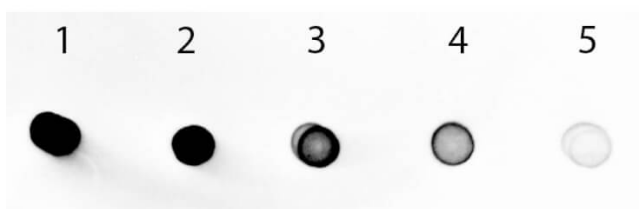
Human IgA (alpha chain) Antibody Alkaline Phosphatase Conjugated

Product data:

Product Type:	Secondary Antibodies
Product Name:	Human IgA (alpha chain) Antibody Alkaline Phosphatase Conjugated
Applications:	ELISA, IHC, WB
Recommended Dilution:	WB: 1:500 - 1:2,500 IHC: 1:200 - 1:1,000 ELISA: 1:2,000 - 1:10,000
Reactivity:	Human
Host:	Goat
Immunogen:	Human IgA alpha heavy chain
Formulation:	0.05 M Tris Chloride, 0.15M Sodium Chloride, 0.001 M Magnesium Chloride, 0.0001M Zinc Chloride, 50% (v/v) Glycerol; pH 8.0
Concentration:	1.0 mg/mL - lot specific
Conjugation:	Alkaline Phosphatase
Storage:	Store vial at 4° C before opening. DO NOT FREEZE. This product is stable at 4° C as an undiluted liquid. Dilute only prior to immediate use. Freezing alkaline phosphatase conjugates will result in a substantial loss of enzymatic activity.
Note:	Anti-Human IgA Alkaline Phosphatase Antibody has been tested by dot blot and ELISA and is assayed against 1.0 ug of Human IgA in a standard capture ELISA using pNPP p-nitrophenyl phosphate code # NPP-10 as a substrate for 30 minutes at room temperature. A working dilution of 1:1,500 to 1:7,000 is suggested for this product.



[View online »](#)

Product images:

Dot Blot of Human IgA Antibody Alkaline Phosphatase Conjugated. Antigen: Human IgA. Load: Lane 1 - 100ng Lane 2 - 33.33ng Lane 3 - 11.11ng Lane 4 - 3.70ng Lane 5 - 1.23ng. Primary antibody: n/a Secondary antibody: Human IgA Antibody Alkaline Phosphatase Conjugated at 1:1,000 for 60 min at RT. Block: MB-070 for 60 min at RT. Visualized using Alkaline Phosphatase Substrate.