

Product datasheet for **TA397750**

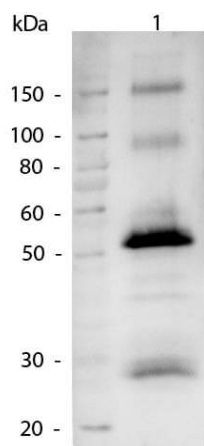
Human IgG (H&L) Antibody Alkaline Phosphatase Conjugated

Product data:

Product Type:	Secondary Antibodies
Product Name:	Human IgG (H&L) Antibody Alkaline Phosphatase Conjugated
Applications:	ELISA, IHC, WB
Recommended Dilution:	WB: 1:500 - 1:2,500 IHC: 1:200 - 1:1,000 ELISA: 1:4,500
Host:	Goat
Immunogen:	Human IgG whole molecule
Formulation:	0.05 M Tris Chloride, 0.15M Sodium Chloride, 0.001 M Magnesium Chloride, 0.0001M Zinc Chloride, 50% (v/v) Glycerol; pH 8.0
Concentration:	1.0 mg/mL - lot specific
Conjugation:	Alkaline Phosphatase
Storage:	Store vial at 4° C before opening. DO NOT FREEZE. This product is stable at 4° C as an undiluted liquid. Dilute only prior to immediate use. Freezing alkaline phosphatase conjugates will result in a substantial loss of enzymatic activity.
Note:	Anti-Human IgG (H&L) Alkaline Phosphatase Antibody has been tested by ELISA, dot blot, and western blot and is suitable for Immunohistochemistry applications. Antibody should be optimized by end user for specific reactive conditions.



[View online »](#)

Product images:

Western Blot of Alkaline Phosphatase conjugated Goat anti-Human IgG antibody. Lane 1: Human IgG. Lane 2: none. Load: 50 ng per lane. Primary antibody: none. Secondary antibody: Alkaline Phosphatase Human secondary antibody at 1:1,000 o/n at 4°C. Block: MB-070 for 30 min at RT. Reaction visualized using alkaline phosphatase for 30 seconds at RT. Predicted/Observed size: 50kDa, 25kDa for Human IgG.