

## Product datasheet for **TA397747**

### Human (lambda chain) Antibody Peroxidase Conjugated

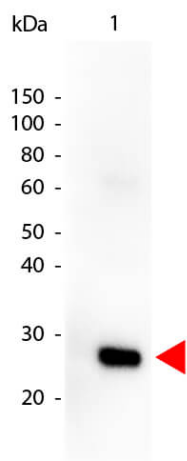
#### Product data:

Product Type:	Secondary Antibodies
Product Name:	Human (lambda chain) Antibody Peroxidase Conjugated
Applications:	ELISA, IHC, WB
Recommended Dilution:	<b>WB:</b> 1:1,000 - 1:10,000 <b>IHC:</b> 1:500 - 1:2,500 <b>ELISA:</b> 1:10,000 - 1:50,000
Reactivity:	Human
Host:	Goat
Immunogen:	Anti-Human lambda chain was produced by repeated immunization with human lambda light chain in goat.
Formulation:	0.02 M Potassium Phosphate, 0.15 M Sodium Chloride, pH 7.2
Reconstitution Method:	Restore with deionized water (or equivalent) - Reconstitution Volume: 1.0 mL
Concentration:	1.0 mg/ml - lot specific
Conjugation:	HRP
Storage:	Store vial at 4° C prior to restoration. For extended storage aliquot contents and freeze at -20° C or below. Avoid cycles of freezing and thawing. Centrifuge product if not completely clear after standing at room temperature. This product is stable for several weeks at 4° C as an undiluted liquid. Dilute only prior to immediate use.
Note:	Anti-Human $\lambda$ (lambda chain) Antibody peroxidase conjugated has been tested by ELISA and western blot and is assayed against 1.0 ug of Human IgG in a standard capture ELISA using ABTS (2,2'-azino-bis-[3-ethylbenthiazoline-6-sulfonic acid]) code # ABTS-100 as a substrate for 30 minutes at room temperature. A working dilution of 1:16,000 to 1:64,000 is suggested for this product. This secondary peroxidase conjugated antibody anti-Human lambda chain is ideal for investigators who routinely perform titration assays, western-blot, immunoprecipitation and more generally immunoassays.



[View online »](#)

## Product images:



Western Blot of Goat anti-HUMAN  $\lambda$  (lambda chain) Peroxidase Conjugated antibody. Lane 1: Human Lambda. Lane 2: None. Load: 50 ng per lane. Primary Antibody: None. Secondary antibody: Peroxidase goat secondary antibody at 1:1,000 for 60 min at RT. Block: MB-070 for 30 min at RT. Predicted/Observed size: 28 kDa for Human Lambda. Other band(s): none.