

Product datasheet for **TA397731**

Human (lambda chain) Antibody

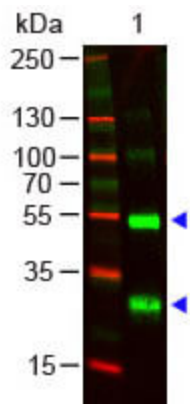
Product data:

Product Type:	Secondary Antibodies
Product Name:	Human (lambda chain) Antibody
Applications:	ELISA, IHC, WB
Recommended Dilution:	WB: 1:500 - 1:2,000 IHC: 1:1,000 - 1:5,000 ELISA: 1:4,000 - 1:20,000
Reactivity:	Human
Host:	Goat
Immunogen:	Anti-Human lambda light chain antibody was produced by repeated immunization with Human lambda light chain molecule in goat.
Formulation:	0.125 M Sodium Borate, 0.075 M Sodium Chloride, 0.005 M EDTA, pH 8.0
Concentration:	1.0 mg/mL - lot specific
Conjugation:	Unconjugated
Storage:	Store vial at 4° C prior to opening. This product is stable for several weeks at 4° C as an undiluted liquid. Dilute only prior to immediate use. For extended storage aliquot contents and freeze at -20° C or below. Avoid cycles of freezing and thawing.
Note:	Anti-Human λ has been tested by ELISA and western blot and is ideal for investigators who routinely perform ELISA, Sandwich ELISA, titration assays, western-blot, immunoprecipitation and more generally immunoassays.



[View online »](#)

Product images:



Western Blot of Goat anti-Human lambda chain Antibody. Lane 1: Human lambda chain. Lane 2: None. Load: 100 ng per lane. Primary antibody: Human lambda chain Antibody at 1:1000 for overnight at 4°C. Secondary antibody: DyLight800 Donkey anti-Goat at 1:20,000 for 30 min at RT. Block: MB-070 for 30 min at RT. Other Band(s): None.