

Product datasheet for **TA397721**

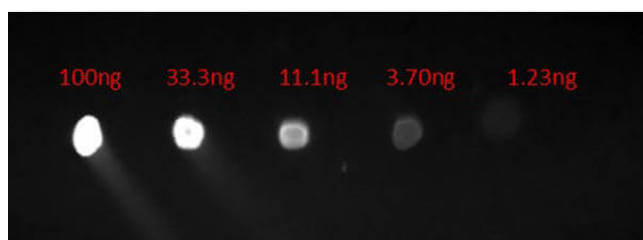
Human IgG F(c) Antibody Fluorescein Conjugated Pre-Adsorbed

Product data:

Product Type:	Secondary Antibodies
Product Name:	Human IgG F(c) Antibody Fluorescein Conjugated Pre-Adsorbed
Applications:	FC, IF
Recommended Dilution:	IF: 1:1,000 - 1:5,000 FC: 1:500 - 1:2,500 FLISA: 1:10,000 - 1:50,000
Reactivity:	Human
Host:	Goat
Immunogen:	Human IgG F(c) fragment
Formulation:	0.02 M Potassium Phosphate, 0.15 M Sodium Chloride, pH 7.2
Reconstitution Method:	Restore with deionized water (or equivalent) - Reconstitution Volume: 1.0 mL
Concentration:	1.0 mg/mL - lot specific
Conjugation:	FITC
Storage:	Store vial at 4° C prior to restoration. For extended storage aliquot contents and freeze at -20° C or below. Avoid cycles of freezing and thawing. Centrifuge product if not completely clear after standing at room temperature. This product is stable for several weeks at 4° C as an undiluted liquid. Dilute only prior to immediate use.
Note:	Anti-Human IgG F(c) Fluorescein Conjugated has been tested by dot blot and is designed for immunofluorescence microscopy, fluorescence based plate assays (FLISA) and fluorescent western blotting. This product is also suitable for multiplex analysis, including multicolor imaging, utilizing various commercial platforms.



[View online »](#)

Product images:

Dot Blot of Goat Anti-HUMAN IgG F(c) Fluorescein Conjugated Antibody. Lane 1: 100ng. Lane 2: 33.3ng. Lane 3: 11.1ng. Lane 4: 3.7ng. Lane 5: 1.23ng. Secondary Antibody: Goat Anti-Human F(c) FITC 1 μ g/mL. Blocking Buffer: BlockOut MB-073 for 30 min at RT.