

Product datasheet for **TA397717**

Human IgG F(c) Antibody Pre-Adsorbed

Product data:

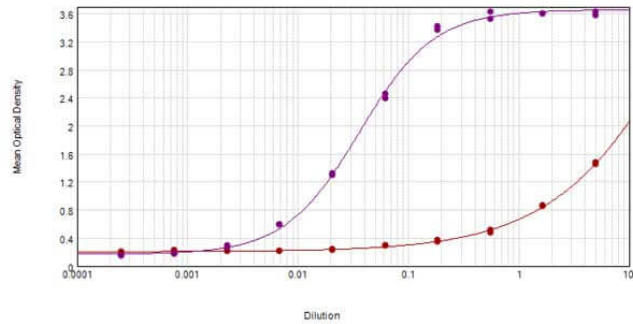
Product Type:	Secondary Antibodies
Product Name:	Human IgG F(c) Antibody Pre-Adsorbed
Applications:	ELISA, IHC, WB
Recommended Dilution:	WB: 1:1,000 - 1:5,000 IHC: 1:1,000 - 1:3,000 ELISA: 1:15,000 - 1:60,000
Reactivity:	Human
Host:	Goat
Immunogen:	Human IgG F(c) fragment
Formulation:	0.02 M Potassium Phosphate, 0.15 M Sodium Chloride, pH 7.2
Concentration:	1.1 mg/mL - lot specific
Conjugation:	Unconjugated
Storage:	Store vial at 4° C prior to opening. This product is stable for several weeks at 4° C as an undiluted liquid. Dilute only prior to immediate use. For extended storage aliquot contents and freeze at -20° C or below. Avoid cycles of freezing and thawing.
Note:	Anti-Human IgG F(c) antibody has been tested by dot blot and ELISA. This antibody is suitable for ELISA, western blot, and immunohistochemistry, as well as other assays requiring lot-to-lot consistency.



[View online »](#)

Product images:

Anti-Human IgG F(c) Min X Mouse Serum Proteins Specificity



Purple line: Human IgG F(c) Red line: Mouse IgG

ELISA results of purified Goat anti-Human IgG F(c) antibody (min x Mouse serum proteins) tested against purified Human IgG F(c) (p/n 009-0103). Each well was coated in duplicate with 1.0 µg of Human IgG F(c) as well as Mouse IgG (p/n 010-0102). The starting dilution of antibody was 5µg/ml and the X-axis represents the Log10 of a 3-fold dilution. This titration is a 4-parameter curve fit where the IC50 is defined as the titer of the antibody. Assay performed using 3% fish gelatin as blocking buffer, Donkey anti-Goat IgG Antibody Peroxidase Conjugated (Min X Ch GP Ham Hs Ms Rb & Rt Serum Proteins) (p/n 605-703-125) and TMB substrate p/n TMBE-1000.