

## Product datasheet for **TA397682**

### Guinea Pig IgG (H&L) Antibody Biotin Conjugated Pre-Adsorbed

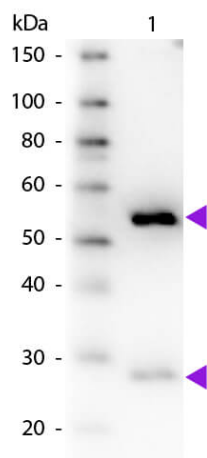
#### Product data:

|                        |                                                                                                                                                                                                                                                                                                                                                  |
|------------------------|--------------------------------------------------------------------------------------------------------------------------------------------------------------------------------------------------------------------------------------------------------------------------------------------------------------------------------------------------|
| Product Type:          | Secondary Antibodies                                                                                                                                                                                                                                                                                                                             |
| Product Name:          | Guinea Pig IgG (H&L) Antibody Biotin Conjugated Pre-Adsorbed                                                                                                                                                                                                                                                                                     |
| Applications:          | ELISA, IHC, WB                                                                                                                                                                                                                                                                                                                                   |
| Recommended Dilution:  | <b>WB:</b> 1:2,000 - 1:10,000<br><b>IHC:</b> 1:1,000 - 1:5,000<br><b>ELISA:</b> 1:10,000 - 1:50,000                                                                                                                                                                                                                                              |
| Host:                  | Donkey                                                                                                                                                                                                                                                                                                                                           |
| Immunogen:             | Guinea Pig IgG whole molecule                                                                                                                                                                                                                                                                                                                    |
| Formulation:           | 0.02 M Potassium Phosphate, 0.15 M Sodium Chloride, pH 7.2                                                                                                                                                                                                                                                                                       |
| Reconstitution Method: | Restore with deionized water (or equivalent) - Reconstitution Volume: 1.0 mL                                                                                                                                                                                                                                                                     |
| Concentration:         | 1.0 mg/mL - lot specific                                                                                                                                                                                                                                                                                                                         |
| Conjugation:           | Biotin                                                                                                                                                                                                                                                                                                                                           |
| Storage:               | Store vial at 4° C prior to restoration. For extended storage aliquot contents and freeze at -20° C or below. Avoid cycles of freezing and thawing. Centrifuge product if not completely clear after standing at room temperature. This product is stable for several weeks at 4° C as an undiluted liquid. Dilute only prior to immediate use.  |
| Note:                  | Anti-Guinea Pig IgG Biotin Antibody has been tested by ELISA and western blot. This product is designed for immunofluorescence microscopy, fluorescence based plate assays (FLISA) and fluorescent western blotting. This product is also suitable for multiplex analysis, including multicolor imaging, utilizing various commercial platforms. |



[View online »](#)

## Product images:



Western Blot of Donkey anti-Guinea Pig IgG Pre-Adsorbed Biotin Conjugated Secondary Antibody. Lane 1: Guinea Pig IgG. Lane 2: None. Load: 50 ng per lane. Primary antibody: Biotin conjugated donkey anti-guinea pig IgG 1:1,000 for 60 min at RT. Secondary antibody: Peroxidase Streptavidin secondary antibody at 1:40,000 for 30 min at RT. Block: MB-070 for 30 min at RT. Predicted/Observed size: 25 & 55 kDa, 25 & 55 kDa for Guinea Pig IgG. Other band(s): None.