

## Product datasheet for **TA397677**

### Guinea Pig IgG (H&L) Antibody Rhodamine Conjugated Pre-Adsorbed

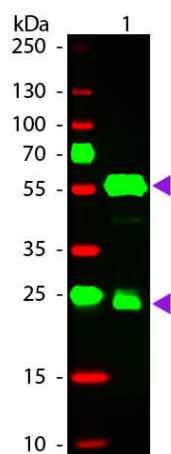
#### Product data:

Product Type:	Secondary Antibodies
Product Name:	Guinea Pig IgG (H&L) Antibody Rhodamine Conjugated Pre-Adsorbed
Applications:	FC, IF
Recommended Dilution:	<b>IF:</b> 1:1,000 - 1:5,000 <b>FC:</b> 1:500 - 1:2,500 <b>FLISA:</b> 1:10,000 - 1:50,000
Host:	Donkey
Immunogen:	Guinea Pig IgG whole molecule
Formulation:	0.02 M Potassium Phosphate, 0.15 M Sodium Chloride, pH 7.2
Reconstitution Method:	Restore with deionized water (or equivalent) - Reconstitution Volume: 1.0 mL
Concentration:	1.0 mg/mL - lot specific
Conjugation:	TRITC
Storage:	Store vial at 4° C prior to restoration. For extended storage aliquot contents and freeze at -20° C or below. Avoid cycles of freezing and thawing. Centrifuge product if not completely clear after standing at room temperature. This product is stable for several weeks at 4° C as an undiluted liquid. Dilute only prior to immediate use.
Note:	Anti-Guinea Pig IgG Rhodamine Antibody has been tested by western blot. This product is designed for immunofluorescence microscopy, fluorescence based plate assays (FLISA) and fluorescent western blotting. This product is also suitable for multiplex analysis, including multicolor imaging, utilizing various commercial platforms.



[View online »](#)

## Product images:



Western Blot of Donkey anti-Guinea Pig IgG Pre-Absorbed Rhodamine Conjugated Secondary Antibody. Lane 1: Guinea Pig IgG. Lane 2: None. Load: 50 ng per lane. Primary antibody: None. Secondary antibody: Rhodamine donkey secondary antibody at 1:1,000 for 60 min at RT. Block: MB-070 for 30 min at RT. Predicted/Observed size: 25 & 55 kDa, 25 & 55 kDa for Guinea Pig IgG. Other band(s): None.