

## Product datasheet for **TA397653**

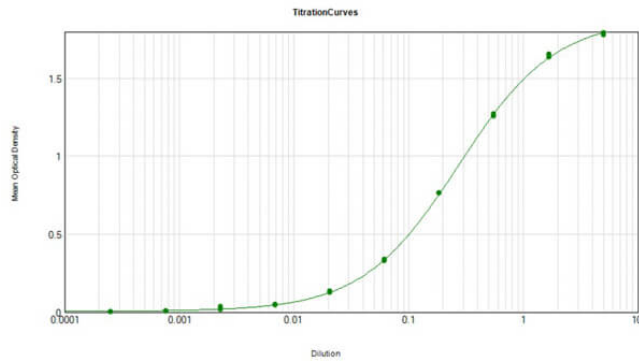
### Goat IgG (H&L) Antibody Alkaline Phosphatase Conjugated

#### Product data:

Product Type:	Secondary Antibodies
Product Name:	Goat IgG (H&L) Antibody Alkaline Phosphatase Conjugated
Applications:	ELISA, IHC, WB
Recommended Dilution:	<b>WB:</b> 1:500 - 1:2,500 <b>IHC:</b> 1:200 - 1:1,000 <b>ELISA:</b> 1:2,000 - 1:10,000
Host:	Chicken
Immunogen:	Goat IgG whole molecule
Formulation:	0.05 M Tris Chloride, 0.15M Sodium Chloride, 0.001M Magnesium Chloride, 0.0001M Zinc Chloride, 50% (v/v) Glycerol; pH 8.0
Concentration:	1.0 mg/mL - lot specific
Conjugation:	Alkaline Phosphatase
Storage:	Store vial at 4° C before opening. DO NOT FREEZE. This product is stable at 4° C as an undiluted liquid. Dilute only prior to immediate use. Freezing alkaline phosphatase conjugates will result in a substantial loss of enzymatic activity.
Note:	Anti-Goat IgG Alkaline Phosphatase Antibody has been tested by dot blot and ELISA. This product has been assayed against 1.0 ug of Goat IgG in a standard capture ELISA using pNPP (p-nitrophenyl phosphate) code # NPP-10 as a substrate for 30 minutes at room temperature. A working dilution of 1:500 to 1:2,000 of the stated concentration is suggested for this product.



[View online »](#)

**Product images:**

ELISA Results of Chicken Anti-Goat IgG Antibody Alkaline Phosphatase Conjugated tested against purified Goat IgG. Each well was coated in duplicate with 1.0  $\mu\text{g}$  of Goat IgG (p/n 005-0102). The working dilution of Goat IgG Alk Phos is 1:3700. The starting dilution of antibody was 5 $\mu\text{g}/\text{ml}$  and the X-axis represents the Log10 of a 3-fold dilution. This titration is a 4-parameter curve fit where the IC50 is defined as the titer of the antibody. Assay performed using HRP stabilizer (p/n MB-067) and NPP Buffer (p/n NPP-500).