

Product datasheet for **TA397651**

Goat IgG (H&L) Antibody Fluorescein Conjugated

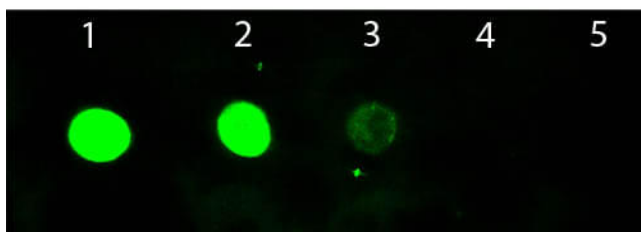
Product data:

Product Type:	Secondary Antibodies
Product Name:	Goat IgG (H&L) Antibody Fluorescein Conjugated
Applications:	FC, IF
Recommended Dilution:	IF: 1:1,000 - 1:5,000 FC: 1:500 - 1:2,500 FLISA: 1:10,000 - 1:50,000
Reactivity:	Goat
Host:	Chicken
Immunogen:	Goat IgG whole molecule
Formulation:	0.02 M Potassium Phosphate, 0.15 M Sodium Chloride, pH 7.2
Reconstitution Method:	Restore with deionized water (or equivalent) - Reconstitution Volume: 1.0 mL
Concentration:	1.0 mg/mL - lot specific
Conjugation:	FITC
Storage:	Store vial at 4° C prior to restoration. For extended storage aliquot contents and freeze at -20° C or below. Avoid cycles of freezing and thawing. Centrifuge product if not completely clear after standing at room temperature. This product is stable for several weeks at 4° C as an undiluted liquid. Dilute only prior to immediate use.
Note:	Anti-Goat IgG Fluorescein Antibody has been tested by dot blot. This product is designed for immunofluorescence microscopy, fluorescence based plate assays (FLISA) and fluorescent western blotting. This product is also suitable for multiplex analysis, including multicolor imaging, utilizing various commercial platforms.



[View online »](#)

Product images:



Dot Blot of Chicken anti-Goat IgG Antibody Fluorescein Conjugated. Antigen: Goat IgG. Load: Lane 1 - 100 ng Lane 2 - 33.3 ng Lane 3 - 11.1 ng Lane 4 - 3.70 ng Lane 5 - 1.23 ng. Primary antibody: n/a. Secondary antibody: Chicken anti-Goat IgG Antibody Fluorescein Conjugated at 1:1,000 for 60 min at RT. Block: MB-070 for 1 HR at RT.