

## Product datasheet for **TA397615**

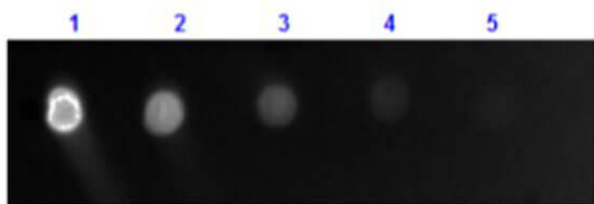
### Dog IgG (H&L) Antibody Fluorescein Conjugated

#### Product data:

Product Type:	Secondary Antibodies
Product Name:	Dog IgG (H&L) Antibody Fluorescein Conjugated
Applications:	FC, IF
Recommended Dilution:	<b>IF:</b> 1:1,000 - 1:5,000 <b>FC:</b> 1:500 - 1:2,500 <b>FLISA:</b> 1:10,000 - 1:50,000
Host:	Goat
Immunogen:	Dog IgG whole molecule
Formulation:	0.02 M Potassium Phosphate, 0.15 M Sodium Chloride, pH 7.2
Reconstitution Method:	Restore with deionized water (or equivalent) - Reconstitution Volume: 1.0 mL
Concentration:	2.0 mg/mL - lot specific
Conjugation:	FITC
Storage:	Store vial at 4° C prior to restoration. For extended storage aliquot contents and freeze at -20° C or below. Avoid cycles of freezing and thawing. Centrifuge product if not completely clear after standing at room temperature. This product is stable for several weeks at 4° C as an undiluted liquid. Dilute only prior to immediate use.
Note:	Anti-Dog Igg Fluorescein conjugated antibody has been tested by dot blot. This product is designed for immunofluorescence microscopy, fluorescence based plate assays (FLISA) and fluorescent western blotting. This product is also suitable for multiplex analysis, including multicolor imaging, utilizing various commercial platforms.



[View online »](#)

**Product images:**

Dot Blot results of Goat Anti-Dog IgG Antibody Fluorescein Conjugate. Dots are Dog IgG: (1) 100ng, (2) 33.3ng, (3) 11.1ng, (4) 3.70ng, (5) 1.23ng. Primary Antibody: none. Secondary Antibody: Goat Anti-Dog IgG Antibody FITC at 1ug/mL in MB-070 1hr RT. Imaged with BioRad ChemiDoc, Fluorescein filter.