

## Product datasheet for **TA397614**

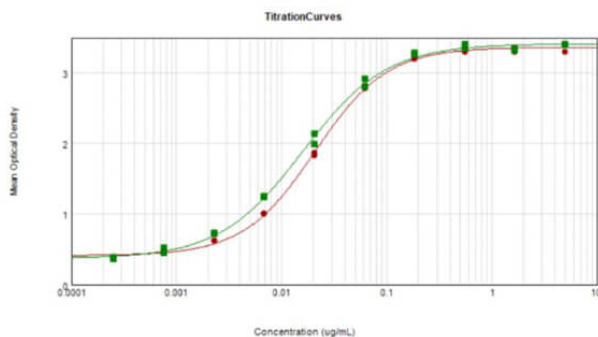
### Dog IgG F(c) Antibody

#### Product data:

Product Type:	Secondary Antibodies
Product Name:	Dog IgG F(c) Antibody
Applications:	ELISA, IHC, WB
Recommended Dilution:	<b>WB:</b> 1:2,000 - 1:10,000 <b>IHC:</b> 1:1,000 - 1:5,000 <b>ELISA:</b> 1:20,000 - 1:100,000
Host:	Goat
Immunogen:	Dog IgG F(c) fragment
Formulation:	0.02 M Potassium Phosphate, 0.15 M Sodium Chloride, pH 7.2
Concentration:	2.0 mg/mL - lot specific
Conjugation:	Unconjugated
Storage:	Store vial at 4° C prior to opening. This product is stable for several weeks at 4° C as an undiluted liquid. Dilute only prior to immediate use. For extended storage aliquot contents and freeze at -20° C or below. Avoid cycles of freezing and thawing.
Note:	Anti-Dog IgG F(c) antibody has been tested by ELISA and dot blot and is suitable for ELISA, western blot, and immunohistochemistry, as well as other assays requiring lot-to-lot consistency.



[View online »](#)

**Product images:**

ELISA Results of Purified Goat Anti-Dog IgG F(c) Antibody tested against purified Dog IgG F(c). Each well was coated in duplicate with 10 µg of Dog IgG F(c) (p/n 004-0103) [Red Line] and Dog IgG (p/n 004-0102) [Green Line]. The working dilution of Dog IgG F(c) is 1:48,000. The starting dilution of antibody was 5µg/ml and the X-axis represents the Log<sub>10</sub> of a 3-fold dilution. This titration is a 4-parameter curve fit where the IC<sub>50</sub> is defined as the titer of the antibody. Assay performed using 3% Fish Gel/PBS Blocking buffer (p/n MB-066), Donkey Anti-Goat IgG mx8 HRP conjugated and TMB substrate (p/n TMBE-1000).