

Product datasheet for **TA397601**

Chicken IgG (H&L) Antibody

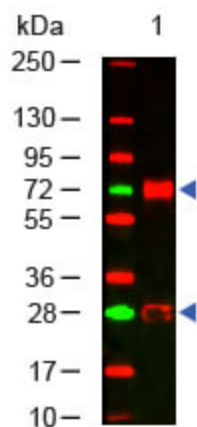
Product data:

Product Type:	Secondary Antibodies
Product Name:	Chicken IgG (H&L) Antibody
Applications:	ELISA, IHC, WB
Recommended Dilution:	WB: 1:10,000 - 1:30,000 IHC: 1:1,000 - 1:5,000 ELISA: 1:200,000 - 1:400,000
Host:	Rabbit
Immunogen:	Anti-Chicken IgG (H&L) was produced by repeated immunization with Chicken IgG whole molecule in rabbit.
Formulation:	0.02 M Potassium Phosphate, 0.15 M Sodium Chloride, pH 7.2
Concentration:	10 mg/mL - lot specific
Conjugation:	Unconjugated
Storage:	Store vial at 4° C prior to opening. This product is stable at 4° C as an undiluted liquid. Dilute only prior to immediate use. For extended storage, aliquot contents and freeze at -20° C or below. Avoid cycles of freezing and thawing.
Note:	Anti-Chicken IgG (H&L) has been tested by ELISA and western blot and is suitable for use in immunoelectrophoresis, western-blot, competitive western-blot, ELISA and competitive ELISA assays. Specific conditions for reactivity and signal detection should be optimized by the end user.



[View online »](#)

Product images:



Western Blot of Rabbit anti-Chicken IgG Antibody. Lane 1: Chicken IgG (p/n 003-0102). Load: 100 ng per lane. Primary antibody: Chicken IgG antibody at 1:1000 for overnight at 4°C. Secondary antibody: DyLight™ 649 rabbit anti-Chicken secondary antibody (p/n 603-443-002) at 1:20,000 for 30 min at RT. Block: 5% BLOTTO (B501) for 30 min at RT. Predicted/Observed size: 72 and 28 kDa, 72 and 28 kDa for Chicken IgY.