

Product datasheet for **TA397598**

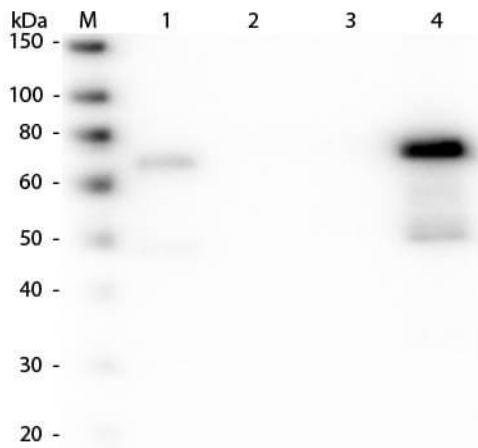
Chicken IgM (mu chain) Antibody Peroxidase Conjugated

Product data:

Product Type:	Secondary Antibodies
Product Name:	Chicken IgM (mu chain) Antibody Peroxidase Conjugated
Applications:	ELISA, IHC, WB
Recommended Dilution:	WB: 1:1,000 - 1:10,000 IHC: 1:500 - 1:2,500 ELISA: 1:10,000 - 1:50,000
Host:	Goat
Immunogen:	Chicken IgM whole molecule
Formulation:	0.02 M Potassium Phosphate, 0.15 M Sodium Chloride, pH 7.2
Reconstitution Method:	Restore with deionized water (or equivalent) - Reconstitution Volume: 1.0 mL
Concentration:	1.0 mg/mL - lot specific
Conjugation:	HRP
Storage:	Store vial at 4° C prior to restoration. For extended storage aliquot contents and freeze at -20° C or below. Avoid cycles of freezing and thawing. Centrifuge product if not completely clear after standing at room temperature. This product is stable for several weeks at 4° C as an undiluted liquid. Dilute only prior to immediate use.
Note:	Anti-Chicken IgM Peroxidase Conjugated antibody has been tested by ELISA and western blot. This product has been assayed against 1.0 ug of Chicken IgM in a standard capture ELISA using ABTS (2,2'-azino-bis-[3-ethylbenthiiazoline-6-sulfonic acid]) code # ABTS-100 as a substrate for 30 minutes at room temperature. A working dilution of 1:10,000 to 1:40,000 is suggested for this product.



[View online »](#)

Product images:


Western Blot of Anti-Chicken IgM (mu chain) (GOAT) Antibody Peroxidase Conjugated (p/n 603-103-007). Lane M: 3 μ l Molecular Ladder. Lane 1: Chicken IgG whole molecule (p/n 003-0102). Lane 2: Chicken IgG F(c) Fragment (p/n 003-0103). Lane 3: Chicken IgG F(ab) Fragment (p/n 003-0105). Lane 4: Chicken IgM Whole Molecule (p/n 003-0107). All samples were reduced. Load: 50 ng per lane. Block: MB-070 for 30 min at RT. Primary Antibody: Anti-Chicken IgM (mu chain) (GOAT) Antibody Peroxidase Conjugated (p/n 603-103-007) 1:30,000 for 60 min at RT. Predicted/Observed Size: 25 and 72 kDa for Chicken IgY, 25 kDa for F(c) and Fab, 75 kDa for IgM. Chicken F(c) migrates slightly higher.