

Product datasheet for **TA397596**

Chicken IgM (mu chain) Secondary Antibody

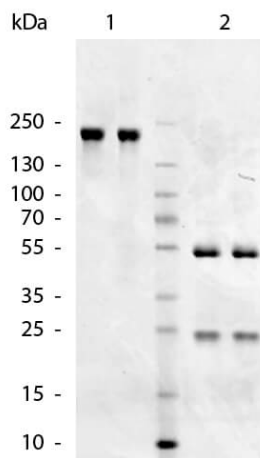
Product data:

Product Type:	Secondary Antibodies
Product Name:	Chicken IgM (mu chain) Secondary Antibody
Applications:	ELISA, IHC, WB
Recommended Dilution:	WB: 1:2,000 - 1:10,000 IHC: 1:1,000 - 1:5,000 ELISA: 1:20,000 - 1:100,000
Host:	Goat
Immunogen:	Chicken IgM whole molecule
Formulation:	0.02 M Potassium Phosphate, 0.15 M Sodium Chloride, pH 7.2
Concentration:	1.19 mg/mL - lot specific
Conjugation:	Unconjugated
Storage:	Store Anti-IgM secondary antibody at 4° C prior to opening. This product is stable for several weeks at 4° C as an undiluted liquid. Dilute only prior to immediate use. For extended storage aliquot contents and freeze at -20° C or below. Avoid cycles of freezing and thawing.
Note:	Anti-Chicken IgM antibody has been tested by ELISA and is suitable for ELISA, western blot, and immunohistochemistry, as well as other assays requiring lot-to-lot consistency.



[View online »](#)

Product images:



SDS-Page of Goat anti-Chicken IgM (Mu Chain) antibody. Lane 1: Gt-a-Chicken IgM Antibody - Non-Reduced. Lane 2: Gt-a-Chicken IgM Antibody - Reduced. Load: 1.0 µg per lane. Predicted/Observed size: 50 kDa, 25 kDa for Reduced. Other band(s): none.