

Product datasheet for **TA397566**

DsRed Chicken Polyclonal Antibody

Product data:

Product Type:	Primary Antibodies
Applications:	ELISA, IF, WB
Recommended Dilution:	WB: 1:1,000 - 1:3,000 IF: 1:100 ELISA: 1:10,000
Reactivity:	RFP, rRFP
Host:	Chicken
Clonality:	Polyclonal
Immunogen:	The immunogen is a Red Fluorescent Protein (RFP) fusion protein corresponding to the full length amino acid sequence (234aa) derived from the mushroom polyp coral <i>Discosoma</i> .
Specificity:	RFP Antibody was prepared from egg yolks by a multi-step process which includes filtration, delipidation, salt fractionation and extensive dialysis against the buffer stated above. RFP Antibody was tested by western blot and immunoelectrophoresis against anti-biotin, anti-chicken serum, and RFP.
Formulation:	0.02 M Potassium Phosphate, 0.15 M Sodium Chloride, pH 7.2
Reconstitution Method:	Restore with deionized water (or equivalent) - Reconstitution Volume: 100 µL
Concentration:	1.0 mg/mL - lot specific
Conjugation:	Biotin
Storage:	Store vial at -20° C or below prior to opening. This vial contains a relatively low volume of reagent (25 µL). To minimize loss of volume dilute 1:10 by adding 225 µL of the buffer stated above directly to the vial. Recap, mix thoroughly and briefly centrifuge to collect the volume at the bottom of the vial. Use this intermediate dilution when calculating final dilutions as recommended below. Store the vial at -20°C or below after dilution. Avoid cycles of freezing and thawing.
Stability:	Expiration date is one (1) year from date of receipt.
Database Link:	Q9U6Y8
Background:	Antibodies to RFP (<i>Discosoma</i> spp.) are intended for use in immunological assays including western blotting.

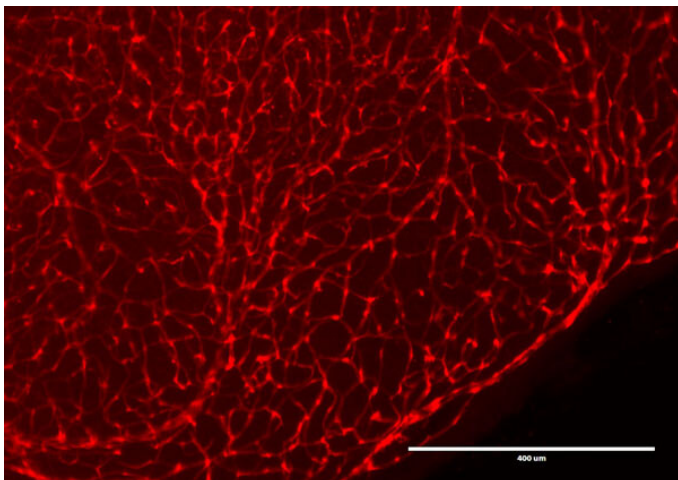


[View online »](#)

Synonyms: chicken anti-RFP antibody biotin conjugation, biotin conjugated chicken anti-RFP antibody, DsRed, rDsRed, Discosoma sp. Red Fluorescent Protein, Red fluorescent protein drFP583

Note: Anti-RFP is designed to detect recombinant RFP. This antibody has been tested to detect RFP by immunoblotting and immunofluorescence and is suitable for use in immunohistochemistry. Use either alkaline phosphatase or peroxidase conjugated polyclonal anti-RFP to detect RFP or RFP containing proteins on western blots. Optimal titers for applications should be determined by the researcher. This product shows optimal performance by western blot.

Product images:



Immunofluorescence Microscopy of Chicken Anti-RFP antibody. Tissue: DsRed transgenic mouse retina. Fixation: 4% PFA. Blocking: 3% BSA, 0.3% Triton Primary antibody: RFP-biotin antibody at 1:100 for 12 h at 4°C. Secondary antibody: Alexa488 secondary antibody at 1:10,000 for 4 hours at RT. Localization: RFP is nuclear and occasionally cytoplasmic. Staining: labeled in red.