

## Product datasheet for **TA397561S**

### cas9 Rabbit Polyclonal Antibody

#### Product data:

Product Type:	Primary Antibodies
Applications:	ELISA, IF, WB
Recommended Dilution:	<b>WB:</b> 1 µg/mL <b>IF:</b> 1 µg/mL <b>ELISA:</b> 1:25,000-1:30,000
Host:	Rabbit
Clonality:	Polyclonal
Immunogen:	Cas-9 affinity purified antibody was prepared from whole rabbit serum produced by repeated immunizations with a synthetic peptide corresponding to a region near the C-terminal of Streptococcus pyogenes Cas-9 protein.
Specificity:	Anti-Cas9 antibody is directed against Streptococcus pyogenes Cas-9. The product was affinity purified from monospecific antiserum by immunoaffinity chromatography.
Formulation:	0.02 M Potassium Phosphate, 0.15 M Sodium Chloride, pH 7.2
Concentration:	1mg/mL - lot specific
Conjugation:	Biotin
Storage:	Store vial at -20° C or below prior to opening. This vial contains a relatively low volume of reagent (25 µL). To minimize loss of volume dilute 1:10 by adding 225 µL of the buffer stated above directly to the vial. Recap, mix thoroughly and briefly centrifuge to collect the volume at the bottom of the vial. Use this intermediate dilution when calculating final dilutions as recommended below. Store the vial at -20°C or below after dilution. Avoid cycles of freezing and thawing.
Stability:	Expiration date is one (1) year from date of receipt.
Database Link:	<a href="#">Q99ZW2</a>
Background:	The Clustered Regularly Interspaced Short Palindromic Repeats (CRISPR) and CRISPR Associated (Cas) system was discovered in bacteria as a defense against foreign DNA, even being believed to act as a sort of prokaryotic immune system. The Cas9 protein is becoming a useful tool in the field of genomic editing for its ability to induce site-directed double strand breaks in DNA. It can cleave almost any sequence complementary to the guide RNA and has recently been used for modifying the genome of human embryos for the first time.

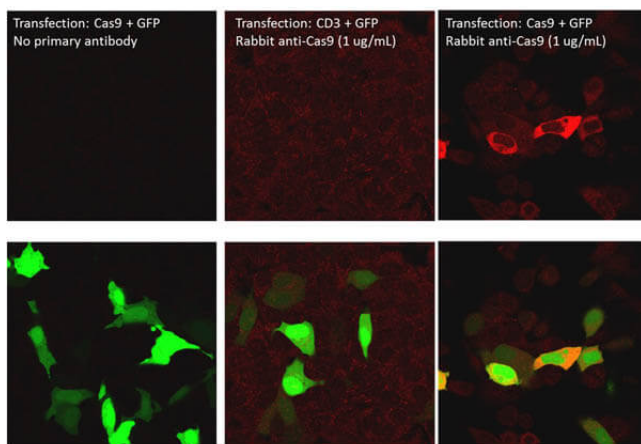


[View online »](#)

**Synonyms:** rabbit anti-Cas9 antibody biotin conjugation, biotin conjugated rabbit anti-Cas9 antibody, Cas-9, Cas 9, CRISPR, CRISPR-associated endonuclease Cas9/Csn1, SpCas9, SpyCas9, csn1, Cas-9 Antibody

**Note:** Cas9 Biotin Conjugated Antibody has been tested for use in ELISA and suitable for Immunofluorescence and western blotting. Specific conditions for reactivity should be optimized by the end user. Expect a band ~158 kDa in size corresponding to Cas-9 protein by western blotting in the appropriate cell lysate or extract.

### Product images:



Immunofluorescence of Rabbit Anti-Cas9 Antibody. Cells: HeLa cells transfected with GFP+Cas9 or GFP+CD-3. Fixation: Formaldehyde fixed, permeabilized Triton X-100. Primary: Anti-Cas9 used at 1 $\mu$ g/mL. Secondary: Donkey anti-Rabbit at 1 $\mu$ g/mL, staining seen in red. Bottom images show GFP stain overlay.