

Product datasheet for **TA397552**

Collagen II (COL2A1) Rabbit Polyclonal Antibody

Product data:

Product Type:	Primary Antibodies
Applications:	ELISA, IHC, IP, WB
Recommended Dilution:	WB: 1:5,000 - 1:10,000 IHC: 1:200 - 1:1,000 ELISA: 1:10,000 - 1:50,000
Reactivity:	Human
Host:	Rabbit
Clonality:	Polyclonal
Immunogen:	Anti-Collagen Type II antibody was produced by repeated immunizations with Collagen Type II from adult human knee cartilage and bovine nasal cartilage.
Specificity:	This product has been prepared by immunoaffinity chromatography using immobilized antigens followed by extensive cross-adsorption against other collagens. Some class specific anti-collagens may be specific for three-dimensional epitopes which may result in diminished reactivity with denatured collagen or formalin-fixed, paraffin embedded tissues. This antibody reacts with most mammalian Type II collagens and has expected cross-reactivity with Type IV and VI and negligible cross reactivity to Type I, III and V collagens. Non-specific cross reaction of anti-collagen antibodies with other human serum proteins or non-collagen extracellular matrix proteins has not been tested.
Formulation:	0.01 M Sodium Phosphate, 0.25 M Sodium Chloride, pH 7.2
Reconstitution Method:	Restore with deionized water (or equivalent) - Reconstitution Volume: 50µL
Concentration:	1.0 mg/ml - lot specific
Conjugation:	HRP
Storage:	Store vial at 4° C prior to restoration. Restore with 0.05 mL of deionized water (or equivalent). For extended storage aliquot contents and freeze at -20° C or below. Avoid cycles of freezing and thawing. Centrifuge product if not completely clear after standing at room temperature. This product is stable for several weeks at 4° C as an undiluted liquid. Dilute only prior to immediate use. Expiration date is one (1) year from date of restoration.
Stability:	Expiration date is one (1) year from date of receipt.
Gene Name:	collagen type II alpha 1 chain



[View online »](#)

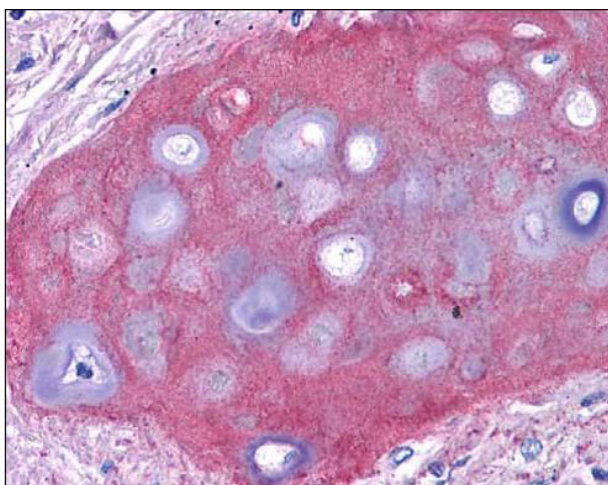
Database Link: [Entrez Gene 1280 Human P02458](#)

Background: Anti-Collagen Type II antibody detects Type-II collagen which is the basis for articular cartilage and hyaline cartilage. It makes up 50% of all protein in cartilage and 85-90% of collagen of articular cartilage. Type II collagen does form fibrils which allow cartilage to entrap the proteoglycan aggregate as well as provide tensile strength to the tissue. Anti-Collagen Type II antibody is ideal for investigators involved in Immunology, Neuroscience and Signal Transduction research.

Synonyms: rabbit anti-Collagen Type II antibody peroxidase conjugation, HRP conjugated rabbit anti-Collagen Type II antibody, Collagen alpha-1 (II) chain, Alpha-1 type II collagen, Cartilage collagen antibody, Chondrocalcin antibody, COL2A1 antibody

Note: Anti-Collagen Type II Peroxidase Conjugated Antibody is suitable for western blotting, IP, IHC and for ELISA. Researchers should determine optimal titers for applications that are not stated below.

Product images:



Immunohistochemistry of Rabbit Anti-Collagen II Biotin Conjugated Antibody. Tissue: human bronchiolar cartilage (shown). Though not shown, faint to moderate staining of tonsillar squamous epithelium, prostatic stroma, breast, colon, placenta, and dermal connective tissues was also observed. All other tissues, including brain, breast epithelium, colon epithelium, heart, intestine, kidney, liver, lung, skeletal muscle, pancreas, spleen, testis, thymus, thyroid, and uterus were negative for staining. Fixation: formalin fixed paraffin embedded. Antigen retrieval: 0.01 M sodium citrate buffer, pH 6.0 at 99-100°C - 20 minutes. Primary antibody: collagen II antibody at 10 µg/mL for 1 h at RT. Secondary antibody: Peroxidase rabbit secondary antibody at 1:10,000 for 45 min at RT. Localization: Collagen II is extracellular. Staining: Collagen II as precipitated red signal with hematoxylin purple nuclear counterstain.