

Product datasheet for **TA397541S**

Cd68 Rabbit Polyclonal Antibody

Product data:

Product Type:	Primary Antibodies
Applications:	ELISA, WB
Recommended Dilution:	WB: 1:1000 ELISA: 1:10,000 - 1:50,000
Reactivity:	Mouse
Host:	Rabbit
Clonality:	Polyclonal
Immunogen:	CD68 affinity purified antibody was prepared from whole rabbit serum produced by repeated immunizations with a synthetic peptide corresponding to a near C-terminal region of mouse CD68.
Specificity:	Anti-CD68 Antibody is directed against mouse CD68 protein. The product was affinity purified from monospecific antiserum by immunoaffinity purification. A BLAST analysis was used to suggest reactivity with this protein from mouse based on 100% homology for the immunogen sequence. Cross reactivity with Cd68 from other sources has not been determined.
Formulation:	0.02 M Potassium Phosphate, 0.15 M Sodium Chloride, pH 7.2
Concentration:	1.02 mg/ml - lot specific
Conjugation:	Unconjugated
Storage:	Store vial at -20° C or below prior to opening. This vial contains a relatively low volume of reagent (25 µL). To minimize loss of volume dilute 1:10 by adding 225 µL of the buffer stated above directly to the vial. Recap, mix thoroughly and briefly centrifuge to collect the volume at the bottom of the vial. Use this intermediate dilution when calculating final dilutions as recommended below. Store the vial at -20°C or below after dilution. Avoid cycles of freezing and thawing.
Stability:	Expiration date is one (1) year from date of receipt.
Gene Name:	CD68 antigen
Database Link:	Entrez Gene 12514 Mouse P31996



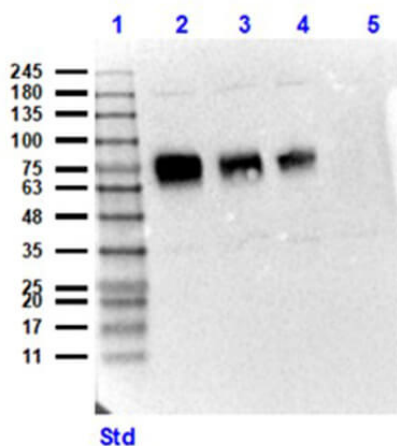
[View online »](#)

Background: CD68, cluster of differentiation, is a 110-kD transmembrane glycoprotein that is highly expressed by monocytes and tissue macrophages. CD68 is a member of a family of hematopoietic mucin-like molecules that includes leukosialin/CD43 and stem cell antigen CD34. Immunohistochemistry can be used to identify the presence of CD68, which is found in the cytoplasmic granules of a range of different blood cells. It is particularly useful as a marker for the various cells of the macrophage lineage, including monocytes, histiocytes, giant cells, Kupffer cells, and osteoclasts. This allows it to be used to distinguish diseases of otherwise similar appearance, such as the monocyte/macrophage and lymphoid forms of leukemia (the latter being CD68 negative). Its presence in macrophages also makes it useful in diagnosing conditions related to proliferation or abnormality of these cells, such as malignant histiocytosis, histiocytic lymphoma, and Gaucher's disease. Anti-Cd68 antibody is suitable for researchers interested in cancer research and the immune system.

Synonyms: Rabbit Anti-CD68 Antibody, Rabbit Anti-Macrosialin Antibody, Gp110, CD68, CD68 Molecule, CD68 Antigen, Scavenger Receptor Class D Member, Macrophage Antigen CD68, SCARD1, LAMP4, Macrosialin

Note: Anti-CD68 Antibody has been tested in ELISA and Western Blot. Expect a band at ~34.8Da in western blot using appropriate tissues and lysates. Positive control used: mouse heart and kidney in WB.

Product images:



Western Blot of Rabbit Anti-CD68 Antibody. Lane 1: Opal Prestained Molecular Weight Marker (p/n MB-210-0500). Lane 2: HeLa + Rec. CD68 (Baculo expressed) protein (10 μ g/0.05 μ g) [+]. Lane 3: HeLa + Rec. CD68 (Baculo expressed) protein (10 μ g/0.02 μ g) [+]. Lane 4: HeLa + Rec. CD68 (Baculo expressed) protein (10 μ g/0.01 μ g) [+]. Lane 5: HeLa whole cell lysate (p/n W09-000-364) (10 μ g) [-]. Primary Antibody: Anti-CD68 at 1:1000 overnight at 2-8°C. Secondary Antibody: Goat Anti-Rabbit IgG HRP (p/n 611-103-122) at 1:70,000 for 60 mins at RT. Block: BlockOut Buffer (p/n MB-073). Expected MW: ~60-70kDa recombinant CD68. Observed MW: ~75kDa.