

Product datasheet for **TA397538S**

Gata1 Rabbit Polyclonal Antibody

Product data:

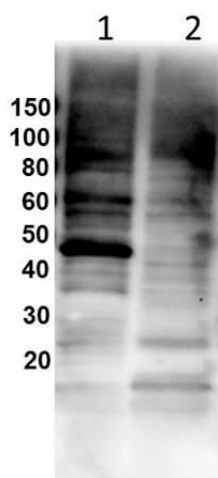
Product Type:	Primary Antibodies
Applications:	ELISA, WB
Recommended Dilution:	WB: 1:500 - 1:2,000 ELISA: 1:15,000 - 1:75,000
Reactivity:	Mouse
Host:	Rabbit
Clonality:	Polyclonal
Immunogen:	Anti-Gata1 affinity purified antibody was prepared from whole rabbit serum produced by repeated immunizations with a synthetic peptide corresponding to mouse Gata1 peptide.
Specificity:	Anti-Gata1 is directed against mouse Gata1. The product was affinity purified from monospecific antiserum by immunoaffinity purification. A BLAST analysis was used to suggest reactivity with this protein from mouse and rat based on 100% homology for the immunogen sequence and 93% to human. Cross reactivity with Gata1 homologues from other sources has not been determined.
Formulation:	0.02 M Potassium Phosphate, 0.15 M Sodium Chloride, pH 7.2
Concentration:	0.73 mg/mL - lot specific
Conjugation:	Unconjugated
Storage:	Store vial at -20° C or below prior to opening. This vial contains a relatively low volume of reagent (25 µL). To minimize loss of volume dilute 1:10 by adding 225 µL of the buffer stated above directly to the vial. Recap, mix thoroughly and briefly centrifuge to collect the volume at the bottom of the vial. Use this intermediate dilution when calculating final dilutions as recommended below. Store the vial at -20°C or below after dilution. Avoid cycles of freezing and thawing.
Stability:	Expiration date is one (1) year from date of receipt.
Gene Name:	GATA binding protein 1
Database Link:	Entrez Gene 14460 Mouse P17679



[View online »](#)

- Background:** Gata1, also known as erythroid transcription factor, is critical in red blood cell and platelet structure and development. It regulates the switch from fetal hemoglobin to adult hemoglobin. Anti-Gata1 antibody is ideal for researchers interested in cell growth and cancer research.
- Synonyms:** rabbit anti-Gata1 antibody, Gata-1, gata 1, Erythroid transcription factor, Eryf1, GATA-binding factor 1, GF-1, NF-E1 DNA-binding protein, Gf-1
- Note:** Anti-Gata1 Antibody has been tested by ELISA and Western Blot. Expect a band approximately 43 kDa in size corresponding to mouse Gata1 by western blotting in the appropriate cell lysate or extract. Researchers should determine optimal titers for applications that are not stated below.

Product images:



Western Blot of Rabbit Anti-Gata1 antibody. Lane 1: NIH/3T3. Lane 2: mouse brain. Load: 25 µg per lane. Primary antibody: Gata1 antibody at 1:1000 for overnight at 4°C. Secondary antibody: HRP rabbit secondary antibody at 1:40,000 for 60 min at RT. Block: MB-070 Fluorescent Blocking Buffer used overnight at 4°C. Predicted/Observed size: 42.7 kDa for Gata1.