

Product datasheet for **TA397527**

PI4KB Rabbit Polyclonal Antibody

Product data:

| | |
|-----------------------|---|
| Product Type: | Primary Antibodies |
| Applications: | ELISA, IHC, WB |
| Recommended Dilution: | WB: 1ug/ml IHC: 5 µg/mL ELISA: 1:10,000 |
| Reactivity: | Human |
| Host: | Rabbit |
| Clonality: | Polyclonal |
| Immunogen: | Anti-PI4K beta affinity purified antibody was prepared from whole rabbit serum produced by repeated immunizations with a synthetic peptide corresponding to an internal region of human PI4K beta protein. |
| Specificity: | Anti-PI4K beta was affinity purified from monospecific antiserum by immunoaffinity chromatography. A BLAST analysis was used to suggest cross-reactivity with bat, rat, primate, mouse, and human based on 100% sequence homology. Cross-reactivity with PI4K beta from other sources has not been determined. |
| Formulation: | 0.02 M Potassium Phosphate, 0.15 M Sodium Chloride, pH 7.2 |
| Concentration: | 1.0 mg/mL - lot specific |
| Conjugation: | Unconjugated |
| Storage: | Store vial at -20° C prior to opening. Aliquot contents and freeze at -20° C or below for extended storage. Avoid cycles of freezing and thawing. Centrifuge product if not completely clear after standing at room temperature. This product is stable for several weeks at 4° C as an undiluted liquid. Dilute only prior to immediate use. |
| Stability: | Expiration date is one (1) year from date of receipt. |
| Database Link: | Q9UBF8 |
| Background: | Phosphatidylinositol 4-kinase beta contributes to the overall PI4-kinase activity of the cell. It contributes to the production of PIP and may regulate Golgi membrane trafficking and reorganization. A member of PI3/PI4-kinase family, PI4KII alpha is widely expressed with the highest amount of expression in the heart, skeletal muscle, pancreas, testis and ovary. Anti-PI4K beta antibody is ideal for investigators interested in Kinase and Phosphatase Antibodies. |

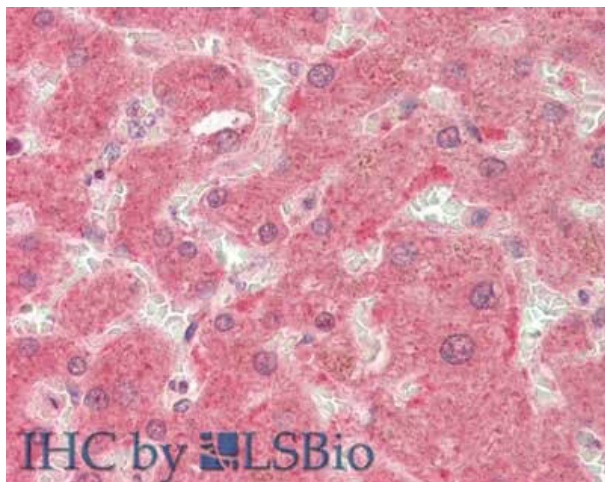


[View online »](#)

Synonyms: rabbit anti-PI4K beta antibody, Phosphatidylinositol 4-kinase beta, PtdIns 4-kinase beta, PI4K β , PIK4CB, PI4KB, NPIK, PI4K92, PI4K-beta

Note: Anti-PI4K beta antibody has been tested by ELISA, IHC, and Western Blot. Specific conditions for reactivity should be optimized by the end user. Expect a band approximately ~91.4kDa corresponding to the appropriate cell lysate or extract.

Product images:



Immunohistochemistry of Rabbit anti-PIK4CB / PI4KB antibody. Tissue: Liver. Fixation: formalin fixed paraffin embedded. Antigen retrieval: not required. Primary antibody: PIK4CB / PI4KB antibody at 5 μ g/mL for 1 h at RT. Secondary antibody: Peroxidase rabbit secondary antibody at 1:10,000 for 45 min at RT. Staining: PIK4CB / PI4KB as precipitated red signal with hematoxylin purple nuclear counterstain.