

Product datasheet for **TA397502**

H3C14 Rabbit Polyclonal Antibody

Product data:

Product Type:	Primary Antibodies
Applications:	ChIP, IF, IHC, WB
Recommended Dilution:	WB: 1 µg/mL IHC: not recommended IF: not recommended ChIP: not recommended
Reactivity:	C. elegans, Human, Mouse
Host:	Rabbit
Clonality:	Polyclonal
Immunogen:	Histone H3 [Monomethyl Lys37] affinity purified antibody was prepared from whole rabbit serum produced by repeated immunizations with a synthetic methylated peptide surrounding Lysine 37 of human Histone H3.
Specificity:	Anti-Histone H3 [Monomethyl Lys37] was affinity purified from monospecific antiserum by immunoaffinity chromatography. This antibody reacts with human Histone H3. A BLAST analysis was used to suggest cross-reactivity with Human, mouse, and C. elegans. Predicted to react with many species including rat, chicken, Xenopus, Drosophila, and plant based on 100% sequence homology. Cross-reactivity with Histone H3 from other sources has not been determined.
Formulation:	0.02 M Potassium Phosphate, 0.15 M Sodium Chloride, pH 7.2
Concentration:	1.0 mg/mL - lot specific
Conjugation:	Unconjugated
Storage:	Store vial at -20° C prior to opening. Aliquot contents and freeze at -20° C or below for extended storage. Avoid cycles of freezing and thawing. Centrifuge product if not completely clear after standing at room temperature. This product is stable for several weeks at 4° C as an undiluted liquid. Dilute only prior to immediate use.
Stability:	Expiration date is one (1) year from date of receipt.
Gene Name:	histone cluster 2, H3c
Database Link:	Entrez Gene 333932 Human Entrez Gene 126961 Human Q71DI3



[View online »](#)

Background:

Chromatin is the arrangement of DNA and proteins in which chromosomes are formed. Correspondingly, chromatin is formed from nucleosomes, which are comprised of a set of four histone proteins (H2A, H2B, H3, H4) wrapped with DNA. Chromatin is a very dynamic structure in which numerous post-translational modifications work together to activate or repress the availability of DNA to be copied, transcribed, or repaired. These marks decide which DNA will be open and commonly active (euchromatin) or tightly wound to prevent access and activation (heterochromatin). Common histone modifications include methylation of lysine and arginine, acetylation of lysine, phosphorylation of threonine and serine, and sumoylation, biotinylation, and ubiquitylation of lysine. Anti-Histone H3 are ideal for researchers interested in Chromatin Research, Epigenetics, Chromatin Modifiers, Histones and Modified Histones research.

Synonyms:

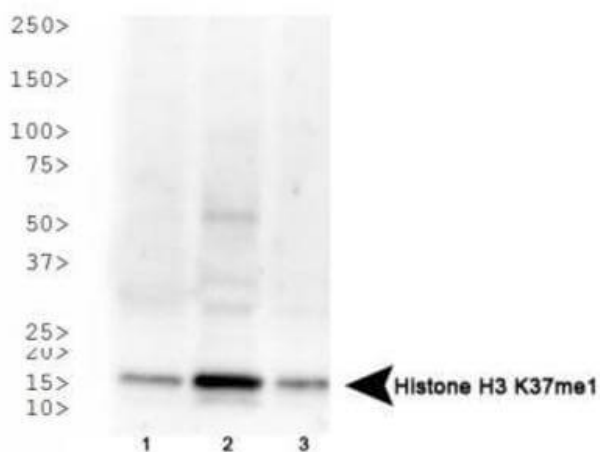
rabbit anti-Histone H3 monomethyl Lys37 antibody, H3.3B, H3 histone, family 3A, H3.3AH3F3H3F3B, histone H3.3, MGC87782, MGC87783, H3K37me1

Note:

Anti-Histone H3 [Monomethyl Lys37] antibody is tested for Bot Blot, Western Blot, and Immunofluorescence. Specific conditions for reactivity should be optimized by the end user. Expect a band approximately ~15.4 kDa corresponding to Histone H3 protein by Western Blotting in HeLa histone prep lysate or the appropriate cell lysate or extract. Anti-Histone H3 is also useful for Dot Blot. Epi-Plus™ antibody production in collaboration with Novus Biologicals.

Protein Pathways:

Systemic lupus erythematosus

Product images:

Western Blot of Rabbit Anti-Histone H3 [Monomethyl Lys37] Antibody. Lane 1: HeLa histone prep. Lane 2: NIH-3T3 histone prep. Lane 3: C. elegans embryo lysate. Load: 30 µg per lane. Primary antibody: Histone H3 [Methyl Lys37] at 1 µg/ml for overnight at 4°C. Secondary antibody: IRDye800™ rabbit secondary antibody at 1:10,000 for 45 min at RT. Block: 5% BLOTTO overnight at 4°C. Predicted/Observed size: ~15 kDa. Other band(s): None.