

Product datasheet for **TA397473**

H3C14 Rabbit Polyclonal Antibody

Product data:

Product Type:	Primary Antibodies
Applications:	ChIP, IF, IHC, WB
Recommended Dilution:	WB: 1:500 IHC: 1:50 IF: 1:50 ChIP: 2-5µg/million cells
Reactivity:	C. elegans, Human
Host:	Rabbit
Clonality:	Polyclonal
Immunogen:	Histone H3 [Monomethyl Lys4, p Thr6] affinity purified antibody was prepared from whole rabbit serum produced by repeated immunizations with synthetic monomethylated/phosphorylated peptides surrounding Lysine 4 and Threonine 6 of human Histone H3.2.
Specificity:	Anti-Histone H3 [Monomethyl Lys4, p Thr6] was affinity purified from monospecific antiserum by immunoaffinity chromatography. This antibody reacts with human Histone H3.2. A BLAST analysis was used to suggest cross-reactivity with Human, mouse, and C. elegans. Predicted to react with many species including rat, chicken, Xenopus, Drosophila, and plant based on 100% sequence homology. Cross-reactivity with Histone H3 from other sources has not been determined.
Formulation:	0.02 M Potassium Phosphate, 0.15 M Sodium Chloride, pH 7.2
Concentration:	0.55 mg/ml - lot specific
Conjugation:	Unconjugated
Storage:	Store vial at -20° C prior to opening. Aliquot contents and freeze at -20° C or below for extended storage. Avoid cycles of freezing and thawing. Centrifuge product if not completely clear after standing at room temperature. This product is stable for several weeks at 4° C as an undiluted liquid. Dilute only prior to immediate use.
Stability:	Expiration date is one (1) year from date of receipt.
Gene Name:	histone cluster 2, H3c



[View online »](#)

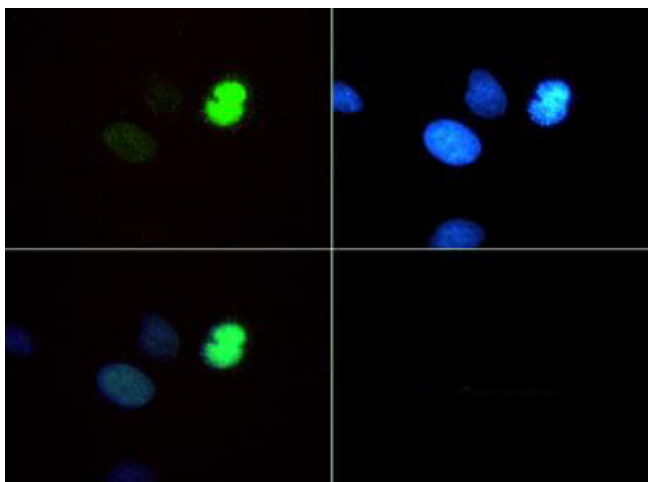
Database Link: [Entrez Gene 333932 Human](#)[Entrez Gene 126961 Human](#)
[Q71DI3](#)

Background: Chromatin is the arrangement of DNA and proteins in which chromosomes are formed. Correspondingly, chromatin is formed from nucleosomes, which are comprised of a set of four histone proteins (H2A, H2B, H3, H4) wrapped with DNA. Chromatin is a very dynamic structure in which numerous post-translational modifications work together to activate or repress the availability of DNA to be copied, transcribed, or repaired. These marks decide which DNA will be open and commonly active (euchromatin) or tightly wound to prevent access and activation (heterochromatin). Common histone modifications include methylation of lysine and arginine, acetylation of lysine, phosphorylation of threonine and serine, and sumoylation, biotinylation, and ubiquitylation of lysine. In particular, trimethylation of lysine 4 on H3 (H3 K4Me3) is a well known mark of gene activation. However, the role of phosphorylation at threonine 6 on H3 (H3 pT6) is more obscure. Yet recently, the two modifications have been shown to interact with each other. When H3 T6 is phosphorylated by protein kinase C beta 1 (PRKCbeta), the histone demethylase LSD1 is prevented from removing methyl groups from H3 K4. This same study also correlated high levels of pT6 and PRKCbeta as a possible marker for prostate cancer, as well as tumor progression in xenografts. Anti-Histone H3 are ideal for researchers interested in Chromatin Modifiers, Chromatin Research, Histones and Modified Histones, and Epigenetics research.

Synonyms: rabbit anti-Histone H3 monomethyl Lys4 pT6 antibody, H3.3AH3F3H3F3B, H3.3B, H3 histone, family 3A, histone H3.3, MGC87783, MGC87782, H3K4me1/pT6

Note: Anti-Histone H3 [Monomethyl Lys4, p Thr6] antibody is tested for Western Blot, Immunofluorescence, and Dot Blot. This antibody is useful for Immunocytochemistry and Chromatin Immunoprecipitation. Specific conditions for reactivity should be optimized by the end user. Expect a band approximately ~15.4 kDa corresponding to Histone H3 protein by Western Blotting in HeLa histone prep lysate or the appropriate cell lysate or extract. Epi-Plus™ antibody production in collaboration with Novus Biologicals.

Protein Pathways: Systemic lupus erythematosus

Product images:


Immunofluorescence of Rabbit Anti-Histone H3 [Monomethyl Lys4, p Thr6] Antibody. Tissue: HeLa cells. Fixation: 0.5% PFA. Antigen retrieval: Not required. Primary antibody: Histone H3 [Monomethyl Lys4, p Thr6] antibody at a 1:50 dilution for 1 h at RT. Secondary antibody: FITC secondary antibody at 1:10,000 for 45 min at RT. Localization: Histone H3 [Monomethyl Lys4, p Thr6] is nuclear and chromosomal. Staining: Histone H3 [Monomethyl Lys4, p Thr6] is expressed in green and the nuclei are counterstained with DAPI (blue).